



PRESS KIT 2025

- 2 *Editorial*
- 3 *Novelties 2025*
- 3 *filigno shelf system*
- 6 *echt.zeit evo kitchen*
- 8 *New wood type: smoked oak*
- 9 *TEAM 7. The Art of Living with Wood.*
- 11 *Designer portraits*



Stefan and Georg Emprechtlinger

Editorial

THE ART OF LIVING WITH WOOD

Since 1959, TEAM 7 has been dedicated to mastering the art of living with wood. We combine the beauty of natural materials with Austrian craftsmanship and elevated interior design to create products that will add a touch of warmth and elegance to any home.

This year, we are opening a new chapter in the story of our brand: The Art of Living with Wood is nothing more or less than an expression of what TEAM 7 stands for – bespoke furniture that celebrates the beauty of wood and the individuality of every interior. This is because, as far as we are concerned, elevated interior design means crafting spaces to live in and giving them that personal touch with extraordinary design icons and exceptional living concepts for any room. All the while, we are also actively embracing our philosophy of “green” principles with products that are made in line with environmental standards and that embody a mindful and sustainable lifestyle.

Our exacting aesthetic standards and focus on innovation are now being emphasised even more strongly with our new brand identity. They are also being reflected in our new products for 2025, such as the **filigno** shelf system with its exquisitely delicate look. Made of three-layer boards a mere 12 mm thick, we are talking here about the slimmest solid wood shelf unit in the world. With a new wood type – smoked oak – coming on board alongside next-generation ceramic surfaces and more new fabric, leather and glass colours, the huge variety of options available to create unique interior designs is being increased significantly. At the same time, the new **echt.zeit evo** kitchen and numerous painstakingly crafted enhancements reflect our commitment to excellence – down to the very last detail.

We are looking forward to enhancing the appeal of the TEAM 7 brand even further and taking the next steps into a successful future.

Dr. Georg Emprechtlinger
CEO, Managing Director

Stefan Emprechtlinger
Managing Director

NOVELTIES 2025

THE WOODEN SHELF, PERFECTED – THE FILIGNO SHELF SYSTEM BY TEAM 7

Leaving nothing to be desired, the **filigno** shelf system by TEAM 7 is synonymous with a clear-cut aesthetic, wood craftsmanship of the highest order and a vast wealth of possibilities. Whether you use it as a handy shelf unit for your home office, a sideboard, a highboard or a room divider, **filigno** can be planned in any size you like and offers limitless design scope for your home.

Consistent design

Restrained, uncomplicated and with delicate lines, the Dominik Tesseraux-designed **filigno** shelf system boasts a timeless elegance that will enrich any interior magnificently. At the heart of the pared-back design is TEAM 7's innovative three-layer technology. This enables thin yet incredibly strong solid wood panels just 12 millimetres thick, which on this particular product are used on both the sides and the shelves. Using the same panels throughout creates a real wood shelf unit with a uniquely delicate yet striking look, while glued elements and sophisticated connecting fittings tailored to the thinness of the material make it even more resilient.



A perfect fit for any size of room

The shelf system is made up of glued elements that come in seven heights, three widths and three depths, each of which can be adjusted precisely. They are connected at the sides by individual shelves and placed one on top of the other. This intelligent and flexible design means that the shelf unit can be planned in any size, allowing you to use every last millimetre of an alcove, for example. This makes **filigno** an attractive option for all manner of different living spaces. For instance, it will make just as much of an impression as a handy storage space in a dining or living room as it will as a room divider for a home office or as a stylish sideboard in a hallway. The fact that several living areas can thus be designed using the same stylistic elements creates holistic, harmonious interiors with smooth transitions.

Giving creativity free reign

The **filigno** shelf unit also leaves nothing whatsoever to be desired in terms of customisation. The fronts and back panels are available in solid wood, coloured glass or ceramic, opening up a wide range of creative possibilities, while open alcove units, hinged doors, drawers and flaps combine to create an expressive interplay between closed and open storage spaces. At the same time, special shelf dividers let you break up the continuity of the unit's look and inject some variety into how the shelves are partitioned. This gives cherished memories and favourite objects the prominent position they deserve, while everything else is hidden away tidily from view.

Giving rooms a smart structure

Where the **filigno** shelf unit is to serve as a room divider, two additional versions are available alongside the classic open design. A clear glass, smoked glass or wood partition that halves the depth of the shelf unit creates a visual divide between the individual living areas and allows the unit to be used from both sides. There is also the option of adding in back panels made from the same range of materials, which act like a front thanks to their delicate milling all the way round. At the front, the full depth of the alcove unit can be used – either open or fitted with a hinged door, drawer or flap.

Using light to conjure up a mood

Aesthetically pleasing yet distinctive lighting is guaranteed thanks to no fewer than three different lighting systems. For the alcove unit lighting, a narrow LED strip is milled into the underside of the shelf near the back panel, creating a poised, uniform illumination for the entire alcove. With the ambient lighting, by contrast, the LED strip sits snugly inside the rear edge of a shortened shelf. The indirect lighting cast on the back panel thus generates a soft glow that creates a cosy atmosphere. Finally, LED spotlights designed specifically for the purpose are a good way to draw attention to objects of interest. Mounted centrally on the underside of the shelves, they showcase selected ornaments and similar items skilfully and artistically with pinpoint lighting from above.

Intelligent additions

Another shining example of the **filigno** shelf unit's versatility is the new option with base: a plinth height of 25 millimetres supplements the existing recessed plinth that is 46 millimetres tall, while the smaller gap between furniture and floor accentuates the shelf unit's minimalist look to an even greater degree. At the same time, integrated height adjusters still allow any unevenness in the flooring to be balanced out with ease.



Sustainability

All TEAM 7 furniture is made of high-quality wood, both inside and out. Its hardwood comes from sustainably managed forests and is only ever finished with natural oil, enabling it to be returned to the cycle of nature at the end of its useful life. All the furniture is manufactured in the company's own plants in Upper Austria. Signs of wear on the surfaces can be erased by following some simple care measures, keeping the furniture beautiful, flexible and easy to dismantle when moving to a new home – not just now, but for generations to come. It can be extended or added to at any time.



Furniture plan with **filigno** shelf sideboard



NOVELTIES 2025

CELEBRATING WOOD – THE ECHT.ZEIT EVO KITCHEN BY TEAM 7

The **echt.zeit** kitchen by TEAM 7 wows with a sensuous interplay of look and feel. Designed with sophistication in mind, it comes with many useful details such as a light bridge and pull-out shelf and represents the next step in the continued evolution of award-winning kitchen design. Innovative continuous fronts give it the appearance of a single piece of furniture – and offer up a unique celebration of wood as a material.

The **echt.zeit** kitchen combines a modern, restrained look with comfort and a natural feel, while the secret behind its distinctive aesthetic lies in its perfectly poised blend of materials. Solid wood elements stand in contrast to the coloured glass or ceramic surfaces and come together to create a perfectly formed kitchen in elegant equilibrium. Its clear lines and expressive material thicknesses give the wood space to show off all its organic beauty to the full. The Sebastian Desch-designed kitchen thus becomes somewhere for people to come together, a place whose warmth invites them to cook and simply spend time in the company of their friends and loved ones.

A dynamic reimagining

echt.zeit evo is now taking things one step further, drawing on the handle-free pur kitchen to add a distinct new nuance to the pithy **echt.zeit** design language. By highlighting the texture of the wood and creating an impression of depth, the vertical millings on the fronts have always been the characteristic feature of the kitchen. The new fronts do away with the horizontal friezes, however, giving the vertical millings free reign and creating a restrained yet clear-cut aesthetic that is all about straight lines. This makes **echt.zeit evo** a vibrant reinterpretation of the genre that will fit like a glove into any contemporary home interior.



The pinnacle of artisan craftsmanship

Yet the new kitchen model also stays true to its traditional craftsmanship roots: the vertical millings exude handcrafted excellence and emphasise the solid wood of the fronts. Spaced at varying intervals, the milled details merge with the front joints to form a harmonious whole and make the kitchen seem like one single, majestic piece of furniture. A dynamic, vibrant look is created in particular by the asymmetry of the groove structure across several fronts, which retains its consistent overall aesthetic despite individual reductions in width.

Decidedly contemporary

echt.zeit evo adds even more versatility to the TEAM 7 kitchen range in terms of the personalised design options available. The new accent front combines purist, clean lines with the natural aura and warmth of solid wood, particularly when matched with handle-free furniture plans for minimalist interiors. However, the kitchen's decidedly contemporary look is also reflected in the profile handles – available in matt black or with a stainless steel finish – that are attached to the top edge of the fronts. As well as the continuous wooden fronts, the individual kitchen cabinets can also be kitted out with aluminium frame doors in matt black and with clear or smoked glass – thus elevating the **echt.zeit evo** even further in the elegance stakes.

Sustainability

All TEAM 7 furniture is made of high-quality wood, both inside and out. Its hardwood comes from sustainably managed forests and is only ever finished with natural oil, enabling it to be returned to the cycle of nature at the end of its useful life. All the furniture is manufactured in the company's own plants in Upper Austria. Signs of wear on the surfaces can be erased by following some simple care measures, keeping the furniture beautiful, flexible and easy to dismantle when moving to a new home – not just now, but for generations to come. It can be extended or added to at any time.



NOVELTIES 2025

ENIGMATIC YET INVITING ELEGANCE – NEW SMOKED OAK WOOD TYPE

With its new smoked oak wood type, TEAM 7 has created a shade that lends furniture a stylish look and gives anyone looking to use solid wood in their room design an exciting new tool in their armoury. The natural technique used to colour the wood is supremely eco-friendly and complies with the requirements of the Austrian Ecolabel.

The new wood type boasts a clean look and makes a modern and elegant impact, while the dark, desaturated colouration of smoked oak opens up numerous new possibilities for interior design. Using a traditional technique enables the colour of the oak to be changed naturally, while preserving its innate vitality. The wooden parts are also finished with the new natural black oil, which is made up of TEAM 7's tried-and-tested natural oil enriched with black pigments. This keeps the pores open on the surfaces, letting them breathe and allowing them to be repaired whenever needed. What's more, the various fronts, top covers, (wall) panels and table tops are brushed. This brings the tactile feel of the wood even more strongly to the fore, while also underlining the natural quality of the surface and making the vibrant beauty inherent in solid wood into something physically tangible. Smoked oak will be available for the whole TEAM 7 range in the future.



tak table and **filigno** shelf sideboard in smoked oak with **grand lui** chairs

PORTRAIT

TEAM 7 – THE ART OF LIVING WITH WOOD

TEAM 7's philosophy is all about translating the beauty of wood into fresh and fascinating forms, while celebrating the individuality of every interior. Based in the town of Ried im Innkreis in Upper Austria, the company melds elevated interior design with craftsmanship and a steadfast commitment to sustainability. For over 40 years, it has been inspiring its customers with exquisite solid wood furniture that adds elegance and warmth to their homes – and becomes their lifelong companion in the process.

Established in 1959 as a small joinery company, TEAM 7 has grown to become a global market leader in sustainable solid wood furniture. The artisan producer employs over 600 people and has sixteen of its own flagship stores in Germany, Austria and Switzerland as well as seven partner stores around the world. It combines clear designs with artisan craftsmanship made in Austria and state-of-the-art manufacturing technologies to create its products. The scope of its range and vertical integration is unique, including both individual pieces and holistic living concepts that are tailored specifically to the customer's preferences. This is possible because TEAM 7 keeps the entire supply chain in its own hands, from the forest to the finished furniture.

Elevated interior design

The manufacturer has set itself the mission of breathing heart and soul into kitchens and living rooms by crafting bespoke solid wood furniture for any interior. Sophisticated and refined down to the tiniest detail, they boast a long functional and aesthetic lifespan. And wood plays a key role in this: showing respect and passion in spades, the designers from TEAM 7 keep coming up with new ways to interpret the unique multifaceted beauty of this natural material. They translate its vibrant beauty into a clear, timeless design style that will delight and inspire whole generations for many decades to come. Over 60 international awards and accolades speak for themselves.

Individually tailored interior design

This mission to produce exclusive design goes hand in hand with a wealth of planning expertise, meaning that TEAM 7 furniture can be made precisely in accordance with its planning brief. This applies to the dimensions and surfaces of the individual items just as much as to interior organisation, the choice of materials and even the tiniest details of the workmanship. Each and every piece of furniture thus fits perfectly and stylishly into its allotted room. But that's not all: TEAM 7 also offers tailored living concepts that take account of individual customer needs and unique architectural features in equal measure. The end result is holistic interiors with a natural aesthetic that conjure up a harmonious dialogue between the individual elements of a room. TEAM 7 has products for any living space, from kitchens, dining rooms and living rooms through to bedrooms, kids' rooms and even home offices. This also allows smooth transitions with perfectly coordinated components to be created. Through close personal dialogue with its customers, TEAM 7 helps craft a home that is tailored entirely to the needs of the people living in it.

Where tradition meets technology

The handcrafted quality of the furniture and the virtually unlimited freedom afforded to the design of personalised interiors are all thanks to a degree of expertise with wood that you won't find anywhere else in the world. The natural material is processed with precision, skill in engineering and innovative production methods. TEAM 7 also employs around 300 highly skilled cabinetmakers who have mastered their craft at the very highest level. Technology and tradition are complementary, not conflicting, ingredients in this recipe for success that ensures perfection across the board. The innovative

nature of this combination is reflected in the company's three-layer technology, for instance, where three layers of the finest hardwood are glued together transversely. This makes the boards extremely stable, while also opening up a world of possibilities in terms of design and function. These include the world's thinnest three-layer board, which is just 12 mm thick and which shapes the delicate look and immense versatility of the new **filigno** shelf system.

Standing up for “green” principles

Part of the core philosophy behind customisation is its capacity to save resources and optimise energy use. These attributes thus form an integral part of TEAM 7's efforts to make an active contribution to mitigating climate change and protecting the environment. As an eco-pioneer since day one, the company has set itself the goal of developing the most eco-friendly and efficient solid wood manufacturing system in the world. This is all about thinking in terms of cycles: from design that lasts, to production and logistics, through to reintegration into the cycle of nature. These “green” principles are evident throughout the entire production process. All of the timber comes from sustainably managed forests, including some from one owned by the company itself. Controlling the entire supply chain guarantees high-quality, environmentally friendly production. All manufacturing is based at the company's Austrian sites in Pram and Ried, supported by local partners and suppliers. TEAM 7 also carries out ongoing analyses and other measures in a constant effort to shrink its own environmental footprint even further, and these endeavours have been rewarded with EMAS certification and the Austrian Ecolabel for a number of decades now.

Taking responsibility

The green vision espoused by the family business is demonstrated in truly impressive fashion at its head office in Ried: a showpiece project for green building, the TEAM 7 Welt (TEAM 7 World) unites contemporary architecture and an uncompromising commitment to sustainability. It is a place where the love of wood and nature can be felt with all the senses, somewhere that inspires people and lets the appeal of the TEAM 7 brand be experienced in a tangible way. With it, the company wants to continue striking out on the unique environmental path it has chosen for itself – and show by example that embracing a modern lifestyle and protecting the climate can go hand in hand.



DESIGNER PORTRAITS

Sebastian Desch | *Head of Interior Design*

- **Born in Ried im Innkreis, Austria, in 1974**
- **Training:**
 - cabinet maker training
 - interior architecture and furniture design at the HTBLA Hallstatt
- **Career milestones:**
 - architectural firm Bauböck, Ried im Innkreis
 - from 1994 interior architect and stylist at TEAM 7
 - from 2008 designer for TEAM 7
 - from 2015 Head of Interior Design
 - from 2016 as Head of Interior Design responsible for the design of selected new products, further development of the existing TEAM 7 product range and the overall corporate architecture of the TEAM 7 brand
- **Designs for TEAM 7 (selection):**
miró table, **pur** kitchen, **echt.zeit/echt.zeit evo** kitchen, **echt.zeit** table, **ur** coffee table, **graphic** design element, **loft** kitchen, **cubus pure** living room range, **hood** clutz rack, **sol** solo piece, **filigno** writing desk, **c3** coffee table, **ark** bar stool
- **Major design awards:**
iF DESIGN AWARD, Red Dot Award, BIG SEE Award, RAUM UND WOHNEN Möbel des Jahres, GREEN GOOD DESIGN Award, ICONIC AWARDS: Interior Innovation



Prof. Jacob Strobel | *Designer*

- **Born in Würzburg, Germany, in 1978**
- **Training:**
 - learned the craft of furniture making in his uncle's carpentry business as a teenager
 - studied wood design at the Faculty of Applied Arts Schneeberg, Germany
- **Career milestones:**
 - 2009 bis 2014 Head of Design bei TEAM 7
 - from 2014 professor at the Faculty of Applied Arts Schneeberg (Faculty of the West Saxon University of Applied Sciences of Zwickau)
- **Designs for TEAM 7 (selection):**
lui chair family, **tak** table, **nox** table, **nox** bed, **yps** table, **stern** coffee table, **aye** chair
- **Major design awards:**
Red Dot Award, GREEN GOOD DESIGN Award, iF DESIGN AWARD, ICONIC AWARDS: Interior Innovation



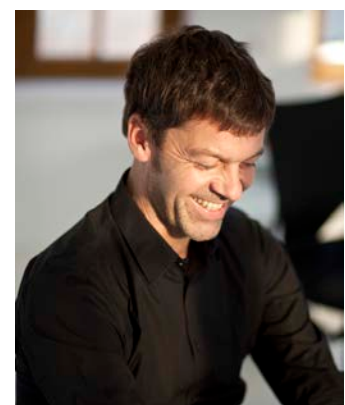
Kai Stania | Designer

- **Born in Salzburg, Austria, in 1965**
- **Training:**
 - studied architecture at TU Wien (Vienna University of Technology), graduated with distinction in 1996
 - industrial design at the University of Applied Arts Vienna
- **Career milestones:**
 - became project leader at Ron Arad's studio in London in 1993
 - became university assistant at TU Wien in 1996
 - 1996 to 2008 university assistant at the Institute of Building Construction and Design at TU Wien
 - in 2002, founded his own design office "kai stania | product design"
 - works with TEAM 7, De Sede, Spectral, Bene, Wittmann, Rolf Benz, Cerrutti, Ungaro, Nina Ricci and Hugo Boss, among others
- **Designs for TEAM 7 (selection):**
pisa desk and desk pedestal, **k7** kitchen, **riletto** bed, **float** bed, **lift** coffee table, **atelier** desk, **loup** side table, **times** bed
- **Major design awards:**
 GOOD DESIGN Award, Red Dot Award, iF DESIGN AWARD, Interior Innovation Award, Design Plus Award



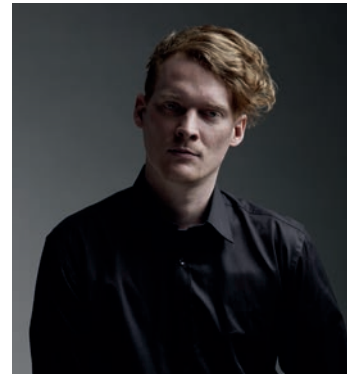
Dominik Tesseraux | Designer

- **Born in Bensheim, Germany, in 1966**
- **Training:**
 - cabinet maker training
 - product design, Darmstadt University of Applied Sciences
- **Career milestones:**
 - Neumeister Design
 - Artefakt
 - Phoenix Design
 - since 2001 – tesseraux+partner, Potsdam, Germany
 - since 2015 – collaboration with TEAM 7
- **Designs for TEAM 7 (selection):**
filigno shelf system, **filigno** coffee table, **filigno** kitchen, **filigno** living room range, EDITION LIGNATUR bathroom furniture
 (co-produced by Keuco and TEAM 7))
- **Major design awards:**
 German Design Award, Red Dot Award, ICONIC AWARDS: Innovative Interior, iF DESIGN AWARD, GOOD DESIGN Award



Stefan Radinger | Designer

- Born in Krems, Austria, in 1986
- Training:
 - New Design University St. Pölten, sustainable product development studies
 - University of Arts Linz, industrial design, scionic studies
- Career milestones:
 - worked during his studies in various design agencies for clients such as Swarovski, Porsche Austria, KTM, EADS, Rosenbauer, Kapsch etc.
 - in 2012 he founded STUDIO SR.ADD, with a focus on communication design and industrial design
 - collaborates with brands, companies and artists in Europe, Australia and the United States, works for Bene AG, TEAM 7, walden, Berndorf and Joseph Organic
- Designs for TEAM 7 (selection):
 - kids** children's range, **light** bed, **italic** ladder, **sidekick** side table
- Major design awards:
 - German Design Award, Red Dot Award, iF DESIGN AWARD, Compasso d'Oro, IDA Award/Los Angeles, Young and Design/Milano, Austrian Interiors, Austria Iconic Award



This Weber | Designer

- Born in Zurich, Switzerland, in 1973
- Training:
 - trained to become an engineer
 - jewellery and industrial design at the Zurich University of Design and Art (today called the Zurich University of the Arts (ZHdK Zürcher Hochschule der Künste))
- Career milestones:
 - from 1999 product designer at Haeberli Marchand Product Development in Zurich
 - worked from 2000 in product development at Gebrüder Thonet GmbH in Frankenberg, Germany
 - from 2001 product designer at Christophe Marchand Product Development in Zurich
 - from 2006 responsible for the furniture design projects at Hannes Wettstein in Zurich
 - since 2010: own studio This Weber Design Unlimited in Zurich
 - designs for international manufacturers such as Atelier Pfister, Crassevig, Fiam Italia, Intertime, Rolf Benz, Very Wood (Gervasoni Group))
- Designs for TEAM 7 (selection):
 - taso** table, **flor** chair and bench
- Major design awards:
 - German Design Award, ICONIC AWARD: Innovative Interior, Interior Innovation Award



Martin Ballendat | Designer

- Born in Bochum, Germany, in 1958
- Training:
 - design studies at the Folkwang University of the Arts in Essen
- Career milestones:
 - Sedus
 - Head of Design and Development at Wiesner-Hager
 - visiting professor for design at the universities of applied sciences in Graz and Salzburg
 - since 1995 – working for more than 40 renowned brands in 16 countries at Atelier DESIGN BALLENDAT (in Upper Austria and Germany)
- Designs for TEAM 7 (selection):
 - girado chair
- Major design awards:
 - Designer of the year in UK 2019, Red Dot Award, iF DESIGN AWARD, German Innovations Award, ICONIC AWARDS: Best Interieur Innovations, Design Plus Award, Österreichischer Staatspreis



Lucie Koldova | Designerin

- 1983 born in Czech Republic
- Training:
 - studied at the Academy of Art, Architecture and Design in Prague
- Career milestones:
 - 2010 2010 Balloons and Muffins lighting collections for Brokis
 - 2012 Lucie Koldova Studio, Paris
 - since 2013 Creative Director at Brokis
 - 2018 “Das Haus” imm cologne ideal home project
 - 2021-2023 solo exhibition „Lightness“ at the Moravian Gallery in Brno
 - since 2014 Lucie Koldova Studio, Prague
 - designs mainly lights, furniture and glass sculptures for international clients such as Brokis, TON, Todus, Freifrau, Fabbian illuminazione, Haymann Editions, Per/Use, La Chance
 - lately working on hotel projects and interior designs
- Designs for TEAM 7 (selection):
 - elliott Lounge Chair
- Major design awards:
 - Red Dot Award, GOOD DESIGN Award, German Design Award, Elle Deco International Design Award, Grand Designer of the Year/Czech Grand Design Award





CONTACT

TEAM 7 Natürlich Wohnen GmbH
TEAM-7-Platz 1 | A-4910 Ried/Innkreis
Telephone: +43 7752 977-700
E-mail: info@team7.at | www.team7-home.com

Contact information for editorial offices:

GeSK agentur für public relations
Ziegelstraße 29 | D-10117 Berlin
Telephone: +49 30 21750460
E-mail: pr@gesk.berlin | www.gesk.berlin