



PRESS KIT

KITCHEN 2024

- 2 *Natural kitchens for a healthy life*
- 4 *Novelties 2024*
- 4 *pur kitchen*
- 6 *sign alcove system*
- 7 *Kitchen creations*
- 7 *echt.zeit – Living consciously, cooking together*
- 9 *filigno – Boundless cooking pleasure*
- 11 *loft – Country cottage meets city loft*
- 13 *k7 – High-level cuisine*
- 15 *linee – Something for everyone*
- 17 *rondo – The kitchen classic*
- 19 *Designer portraits*



NATURAL KITCHENS FOR A HEALTHY LIFE

Conscious sustainability, mindfulness and health

Solid woods, sustainable qualities and natural materials that have their own story to tell and are pleasant to the touch appeal to the senses. With its vibrant grain and characteristic colour tones, solid wood takes the aesthetic of the kitchen to a whole new level. This is palpable with all TEAM 7 products, including our kitchen innovations for 2024. Because this collection combines natural qualities with high-end design and exquisite carpentry. Made from 100% solid wood and adapted to personal specifications and individual layouts with millimetre precision, our kitchens are inviting spaces to spend time in. Because a TEAM 7 kitchen brings a piece of nature right into the home. TEAM 7 exclusively uses European hardwood trees from sustainable forestry. Our kitchens are made to order and produced using environmentally friendly methods at our own workshops in Austria – from timber and board production through to the finished kitchen. This is how the company ensures that the forests that are so important when it comes to protecting our climate can also be preserved for future generations.

Additional advantages of solid wood

But our solid wood kitchens have even more to offer: formaldehyde-free and finished exclusively with natural oil, the wooden surfaces are breathable. They absorb moisture and humidity and release it again when the air is dry, helping to maintain a pleasant room climate. Wood also has a natural anti-bacterial and anti-static effect, and can even neutralise odours. What's more, the natural material is extremely robust and effortlessly withstands even the most hectic comings and goings of kitchen life. This makes TEAM 7 kitchens resilient, durable and particularly easy to care for. By choosing not to use varnish or other chemicals, the wood is also completely free from harmful substances. This ensures that TEAM 7 kitchens promote a healthy cooking environment and can be re-integrated back into the material cycle after a long lifetime of usage.

Individual planning

In today's world, the kitchen is playing an ever greater role as an architectural feature. With open-plan designs extending to the dining and living areas, planning is more important than ever. Whether it's a modest kitchenette, a spacious kitchen-living area or a complete room concept with flowing transitions into other living areas – every TEAM 7 solid wood kitchen is custom-designed and made to measure. Because, in order to ensure that nothing stands in the way of enjoying unrestricted cooking pleasure, there needs to be a perfect balance between ergonomics, layout and the right separations of individual cooking areas, room configurations, space requirements and fixtures and fittings. The option to adjust heights, widths and depths to different requirements allows us to tailor your kitchen with millimetre precision and even implement bespoke designs.

Design and stylistic diversity

Just as in cooking, the design and layout of a kitchen is all about the ingredients. Everyone has their own style and individual preferences. For example, impressive material thicknesses wonderfully showcase the fine solid wood, while breakfast bars, counters, islands and add-on tables establish a new cooking culture and constitute the kitchen as a social environment, transforming it into a meeting point for the whole family. By introducing dining tables, chairs and benches, a series of atmospheric areas can be created that complement the kitchen in terms of design, wood type and materials. The new element system with recessed grips creates a feeling of homeliness and brings a pleasing sense of calm to the kitchen. Combining the solid wood with different materials, including coloured glass, ceramic, metal and natural stone enhances the kitchen design. No matter what the style – from modern country cottage or delicate design lines through to chic elegance with velvety black surfaces or individual creations from the wide range of options that TEAM 7 has to offer.

Sophisticated functions

It's also worth taking a look behind our exclusive kitchen fronts: the custom-made cupboards and cabinets of TEAM 7's solid wood kitchens ensure that the ingredients and cooking utensils are always within easy reach and impress with the vast amount of storage space they offer. Because keeping things neat and tidy is a very important factor for a comfortable kitchen. This requires a high level of manufacturing competence, system intelligence and ergonomic expertise. TEAM 7 demonstrates just how attractive and functional it can be to maintain a clear sense of order with its latest alcove system. It can be arranged however the user wishes, in all different sizes, mounted on panels and walls. With its modern design and integrated lighting, this system can also be installed in other areas of the home and is sure to make an impression in the black aluminium design option. Pull-out shelves, functional cabinet inserts and power sockets for electrical appliances also help make light work of activities in the kitchen. Carefully selected natural materials, craftsmanship with maximum precision and design finesse are what make TEAM 7's solid wood kitchens really stand out. They combine sustainability, design and technology, culminating in a space of culinary delight, where nature is at home and people feel at ease.

NOVELTIES 2024

PUR KITCHEN BY TEAM 7: NEW ELEMENT SYSTEM WITH RECESSED GRIPS

Comfortable handling meets a linear, ultra-minimalist design: by introducing finely crafted recessed grips for top and bottom cabinets, TEAM 7 is offering its customers more creative freedom when designing their kitchen. The ingeniously constructed, precisely dimensioned recess makes it delightfully easy to open hinged doors, drawers and pull-outs – while consistently pursuing the idea of a sleek, minimalist kitchen design with clear lines. In order to seamlessly turn this vision into a reality, we needed to employ creativity and expertise: that's why TEAM 7 designed a new element system specifically for this purpose, carefully taking into account the design requirements of the new style of handle. The **pur** kitchen was designed by Sebastian Desch.

Clean look with no handles

The recessed grips open up a wealth of design options and leave no wish unfulfilled. On bottom cabinets, for example, grips can be positioned both at the top and in the middle or – in combination with drawers, pull-outs with a soft-touch opening or servo drive mechanism – at the top only. Tall cabinets with vertical-grain wood fronts or glass fronts, on the other hand, can be fitted with vertical recessed grips extending up to 227.8 cm to cover the entire height of the cabinet. The elegant design of the **pur** kitchen is also characterised by the new continuous tall cabinet fronts, which create a clean look without any handles or horizontal joints. Last but not least, the recessed grip enables users to open the hinged doors at any height, offering an additional level of comfort and flexibility.

Custom-made element system

The style-conscious design element is made to measure and calls for precision in every detail – even though it meant that we had to create an entirely new element system. This was done to avoid differences in height between the bottom cabinet and tall cabinets at the front joints. The result: the bottom cabinet is now 3 cm taller to ensure that not even the slightest bit of storage space is lost. The correspondingly lower plinth height ensures an ergonomic working level, while giving the kitchen a more inviting appearance.

In addition to the matt black and stainless steel metallic surfaces, TEAM 7 has also developed a recessed grip made from solid wood, which is available in the wood types alder, beech, oak and walnut. Using a mix of different materials creates diversified, exciting contrasts that give off a modern and dynamic edge. True wood purists, on the other hand, can design a kitchen that looks resplendent in pure solid wood, from the plinth all the way to the top of the tallest cabinet. Absolute creative freedom is also guaranteed here: the new recessed grips are available for all TEAM 7 front systems.



New end panels for kitchen islands and kitchenettes

A range of end panels for kitchen islands and kitchenettes that carefully coordinate with the new recessed grips have also been designed. The new panels are available in solid wood, coloured glass or ceramic. What makes them so special: if the panels are finished at the same height as the fronts, the recessed grip will run all the way round the top of the kitchen island, making the worktop appear to float and giving it a weightless elegance. The wooden panels are mitred by our master craftsmen, and the front panel can be cut with a width anywhere between 5 and 20 cm, depending on the wishes of each individual customer. From 10.9 cm and wider, an optional socket behind a stylish wooden flap provides additional convenience. In the version where the panel is flush with the worktop, the front and back of the kitchen island can be designed differently and thus adapted to personal requirements, as the recessed grip isn't continuous. All panels can be either continuous in height or divided by a delicate, horizontal joint to achieve the desired look in each case. As an alternative to finishing the end of a kitchen island or kitchenette with a panel, customers have the option of instead opting for a unit side with a fine wooden edge that's visible from the front – something that's only possible with genuine solid wood, whereby the delicate physicality of the wood is what lends this detail its distinctive charm.

With the new, handleless **pur** kitchen model, TEAM 7 is introducing yet another timelessly modern design – and is showcasing it impeccably with craftsmanship and a spirit of innovation.



NOVELTIES 2024

TEAM 7 SIGN ALCOVE SYSTEM: A BRILLIANT WAY TO STAY ORGANISED

Sophisticated furniture elements, top-quality craftsmanship and individual planning and design freedom are all part and parcel of TEAM 7's solid wood kitchens. Cleverly designed and versatile, they take a systematic approach to organisation – and combine aesthetic design with practical functionality.

sign is a modular alcove system designed by TEAM 7, which opens up a whole new world of possibilities for presenting open storage space in the kitchen in an elegant way. The system is designed to not only consider the free space between the top cabinets and the worktop, it also makes good use of every single centimetre on the wall. **sign** gives off a comfortable and elegant charm with its modern matt black aluminium design option. The slender elements captivate with their striking geometry, and appeal to customers thanks to the multitude of possible arrangements. Diverse shelf formats and a range of functional elements – such as a tablet and kitchen roll holder, hooks, shelves and a magnetic strip for knives in solid wood – can be combined in line with customers' individual specifications and create a sense of order, while still giving of an air of style. The shelving elements can also be fitted with practical boxes from TEAM 7's existing range of alcove solutions – cleverly combining open and enclosed storage spaces.

The pièce de résistance and true highlight of the sign system is the lighting profile with individually adjustable colour temperature. It creates lighting accents that can shine both upward and downward, from warm white to cool white in whatever intensity is needed. The profile, which is illuminated evenly across its entire length, and the freely positionable elements each create their own exciting overall impression – all while fulfilling aesthetic, functional and spatial requirements.



KITCHEN CREATIONS

LIVING CONSCIOUSLY, COOKING TOGETHER

THE ECHT.ZEIT KITCHEN: AN EXPERIENCE FOR ALL THE SENSES

TEAM 7 Head of Design Sebastian Desch has created a place for real interaction and spending time with one another in the form of the **echt.zeit** kitchen. His inspiration: to combine handcrafted solid wood and smart functions with an ecological lifestyle and communal experience.

From the feel of the materials and the scent of fresh herbs to the lovingly designed details, the motto of the **echt.zeit** kitchen is: enjoy with all your senses. TEAM 7 discreetly blends warm living comfort with invisible technology and intelligent ergonomics – and interprets solid wood in a modern way. There is a clever interplay between the look and feel, which highlight the kitchen's expressive material thickness with clear lines. The character of the solid wood is further emphasised by the vertical millings of the **echt.zeit** fronts. They accentuate the wood's physical texture and create a visual depth. Combined with open shelving, the result is a kitchen with modern charm that radiates cosiness, but at the same time impresses with comfort and functionality.

The focal point is the kitchen island, which serves as a hub for cooking, washing up and eating. Designed at different heights, the three distinct areas enable ergonomic working and flowing processes. Efficiency is also guaranteed thanks to variable drawer inserts, a dedicated chef's knife drawer with a magnetic insert and pull-out shelf for kitchen utensils, along with matching alcove elements. Another plus point is the undersink cabinet, which was specially designed for a practical and environmentally friendly water treatment system. The removable boxes in the storage cupboard are just



as well thought out. The matt black light bridge of the **echt.zeit** kitchen takes centre stage: whether it serves as a practical, dimmable light source or as a chic design element, it casts a pleasant and atmospheric glow on all the various kitchen utensils and creates a cosy working environment. Fresh, home-grown herbs thrive under the light too.

A key element of the modern kitchen space is the open shelf. Dishes, pots, food, niche elements or removable spice racks are not only easily accessible in this way, but have also transformed into stylistic devices. The integrated LED lighting creates the perfect setting for illuminating the whole shelf to great effect. Whether as a free-standing room divider, individual wall shelf, or part of a medium or tall cabinet – with its versatile uses, the open shelf is a flexible all-rounder. As well as this, it emphasises the powerful aesthetic and valuable physicality of solid wood, which is a recurring theme throughout the entire **echt.zeit** kitchen.



KITCHEN CREATIONS

BOUNDLESS COOKING PLEASURE

FILIGNO CREATES ELEGANT, FLOWING TRANSITIONS BETWEEN KITCHEN, DINING AND LIVING AREAS

Slender and versatile – **filigno**: TEAM 7 worked with the design agency Tesseraux + Partner to develop the **filigno** range, which includes furniture for kitchens and living areas as well as occasional furniture. The essential ingredient is pure solid wood. Other materials such as ceramic are tastefully combined with the wood. This highly successful design recipe also includes clean lines, precise workmanship, and a sophisticated lightness of style. The elegance of the **filigno** range is defined by the three-layer solid wood panels – just 12 mm thick, but tremendously stable in form – which encase the body of the elements. A subtle shadow gap at the corners accentuates the slender lines of the design. **filigno** showcases TEAM 7's expertise with solid wood – evident here in the fine construction, using triple-layer technology, with end-grained edge inserts and many other precise details of workmanship – including in the interiors. The minimalist design and natural wood elegance of the **filigno** kitchen are matched in the lines of the **filigno** range for living and dining areas.

These days kitchens and cooks are no longer hidden away behind closed doors. Hosts and guests share the enjoyment, in an open culinary workshop that links seamlessly into the dining area and on into the living room. The layout of modern homes makes this sort of open plan design possible – especially in combination with the right furniture. **filigno** is a complete furniture range created for all living areas in the home – the perfect choice for consistent design style throughout.



Sideboard or kitchen island? **filigno** can be both at once. While the attached work surface made of ceramic turns it into a functional cooking island, the front part of the island serves as a sideboard. So the kitchen blends into the dining area. **filigno** occasional furniture also helps create seamless transitions between kitchen, dining and living areas. Stylish sideboards and highboards, consoles and wall shelves enhance any living area, with elegantly linear design, precise finishing details and smart functionality.

The visual lightness of the **filigno** kitchen island is complemented by a recessed plinth. The island seems to float above the floor. A recessed plinth can also be selected for **filigno** occasional furniture. Alternative options are slides, wooden panels or a metal frame base – or the elements can be mounted directly on the wall.

Customers designing their **filigno** dream kitchen have a choice of several different wood types, as well as fronts in coloured glass or ceramic, and various styles of handles. Interiors for kitchen storage furniture are also individually designed for each customer. The result is high-quality unique kitchens.



KITCHEN CREATIONS

COUNTRY COTTAGE MEETS CITY LOFT

WITH LOFT YOU CAN ENJOY A HEALTHY COUNTRY LIFESTYLE IN THE CITY

The **loft** kitchen may be inspired by authentic materials and the rustic charm of a country kitchen, but its contemporary confidence means it is perfectly at home in the urban environment, such as modern loft apartments.

“The **loft** kitchen is the modern country-style kitchen for those who love wood, enjoy cooking, and appreciate authentic craftsmanship with natural materials,” says TEAM 7 Head of Design Sebastian Desch, summing up the character of this TEAM 7 kitchen. Clear design lines and a subtle edge profile give the kitchen a clean, purist style, while meticulously constructed, strong wood joints celebrate traditional artisan craftsmanship of the highest quality. Lovingly handcrafted details include superb mortice-and-tenon joints and wood-framed fronts with clear glass panels. Urban or country style, modern or classic, future-oriented or traditional: TEAM 7’s **loft** kitchen combines these apparent opposites harmoniously.

From simple kitchenette to luxurious kitchen-living area with an island unit, **loft** offers optimal solutions for widely varying needs and living spaces – transforming the kitchen into a place for the whole family to gather. Open shelving that can be added equally well to a kitchen island or a kitchenette offers design flexibility. Technical details like soft-close sliding doors on the top cabinets, or the LED lighting, make **loft** a truly contemporary kitchen that is also highly practical and comfortable for everyday use.



Optional extras like the optional end-grain wooden butcher's block with juice rim integrated into the worktop enhance its everyday practicality. Containers made of stainless steel or any of the TEAM 7 wood types can be added into alcoves or positioned freely on the worktop, to accommodate fresh herbs, cooking utensils, spices or a knife block. With tasteful features like these, the **loft** kitchen will whet your appetite for cooking, craftsmanship and healthy food.

Now you can enjoy the fresh air of the countryside in your city home. As in all TEAM 7 kitchens, the wooden surfaces of the **loft** kitchen are exclusively finished with pure natural oil. This solid wood kitchen is free of harmful substances, has an appealing natural scent, helps regulate humidity and acts as a natural filter for cooking odours.

The **loft** kitchen combines the natural qualities of wood – including its many positive characteristics – with the elegance of craftsmanship detailing and finish, as well as optimal functionality.



KITCHEN CREATIONS

HIGH-LEVEL CUISINE

HEIGHT-ADJUSTABLE K7 COMBINES THE LATEST TECHNOLOGY, CRAFTSMANSHIP AND NATURE

What do you get when you cross a kitchen with an elevator? TEAM 7 presents **k7**, designed by Kai Stania: the impressive result of this unusual liaison is a kitchen that glides to another level at the touch of a button.

At the heart of the **k7** is a kitchen island with a height-adjustable worktop, which is setting completely new standards. It can be ergonomically adjusted to suit any user, according to their height and what they are doing. Whether it is for washing up, chopping or cooking, the worktop can always be set to the perfect height, to save back strain. The high-tech kitchen island is not just outstandingly comfortable to use, it also creates a smooth transition into dining or living areas. With a lowered worktop, the **k7** island can take on the role of a sideboard, retreating discreetly into the background. With the worktop raised, it transforms itself into a modern bar counter, ideal for serving drinks and finger food.

Thanks to its smart mechanism, the worktop can be continuously adjusted to any height from 74 to 114 cm. The height adjustment system is almost completely noiseless and extremely easy to operate – a triumphant breakthrough in kitchen design for this pioneering solid wood specialist. The patented, globally unique lifting technology was developed in-house by TEAM 7. A flush-fitted control switch built into the edge of the worktop completes this beautifully crafted design option. The **k7** kitchen island is also completely without handles. All drawers include touch-operated electronic opening, so that they can be opened and closed with just a light touch.



TEAM 7

The LGA-tested and GS-certified (“Tested Safety”) kitchen with a stylish combination of materials: solid wood meets coloured glass fronts, quartz, natural stone or ceramic for the worktop, with stainless steel elements too. This combination creates a synthesis of nature and urbanity, of pure sensuousness and rigorous practicality. The “painting with wood” technique, typical of TEAM 7 furniture, is also in evidence on the **k7** kitchen island: the continuous wood grain pattern on the hand-selected fronts means the wooden surfaces create a remarkably harmonious and natural overall impression.

With its unique combination of nature, design and innovative technology, the **k7** has become the flagship for TEAM 7 kitchens.



KITCHEN CREATIONS

SOMETHING FOR EVERYONE

LINEE OFFERS CUSTOMISED KITCHEN DESIGNS IN WOOD, GLASS AND CERAMIC

This is the chameleon of TEAM 7 kitchens. With a huge range of different styles available, the **linee** kitchen adapts easily to any kind of space requirements and every individual customer's wishes. The combination of different types of solid wood – ranging from cherry and oak to walnut, beech and alder – and coloured glass offers scope for variety when it comes to the kitchen design. In classic or modern style, from a simple kitchenette to a large family kitchen with an island unit, **linee** makes planning as simple as a wish list. Numerous configuration options means there is a perfect solution for any taste. There is a wide choice of handles, front styles and elegant coloured glass sides.

The **linee** kitchen mainly gets its modern aesthetic from its harmoniously flowing grain pattern. The fine wood pattern, which runs continuously horizontally or on request vertically, combines a natural vibrancy with a calming quality, exuding a warm and cosy atmosphere. The kitchen also gives off a homely feel thanks to the interplay of closed and open elements. The open alcove units provide space for arranging decorative accessories, attractive glassware, spice mills or a mortar and pestle, and break up the overall look of the kitchen. With clear or smoked glass doors and the option of installing dimmable LED lighting, these units can also be designed as display cases that create an elegant transition between the kitchen and the dining and living areas. The back panels of these display cases are available in various shades of glass or solid wood with horizontal or vertical grain pattern, expanding the variety of available planning options.

As well as its distinctive aesthetic appeal, the **linee** kitchen also prioritises comfort and ergonomics. Practical innovations simplify everyday tasks in the kitchen. A gentle tap is all it takes to open drawers and doors. And tucked away behind elegant solid wood surfaces are practical power sockets.



KITCHEN CREATIONS

cera line: fascinating contrasts

The **cera line** offers the perfect blend of wood and another high-quality natural material: ceramic. Generous use of this material is the defining feature here, creating a fascinating contrast with the natural wooden surfaces. Ceramic also offers many practical advantages in everyday use. It is hygienic and easy to care for, making it ideally suited for contact with food. Knife blades, liquids and even acidic substances will not damage this resilient material. This tasteful combination of wood and ceramic creates a distinctive style with a delightfully warm and cosy character.



black line: warm wood and cool elegance

The **black line** is a strikingly elegant version of the **linee** kitchen, created by TEAM 7 Head of Design Sebastian Desch. Matt black coloured glass is combined with fine smoked glass, matt black handles and plinth panels. Open and closed design elements made from pure solid wood give the kitchen a more relaxed style and create a cosy look. Of course, the **black line** remains a solid wood kitchen at heart: behind the cool elegance of its black surfaces are solid wood elements, giving the kitchen warmth and stability. This purist designer version of a solid wood kitchen combines wood, glass and metal to create a thoroughly modern kind of cosiness.

I1: the attractive entry-level kitchen

I1 is the little sister of the **linee** kitchen – and the family resemblance is unmistakable: the same superb TEAM 7 quality, the same types of wood, the same timelessly elegant design style. The options in this range are a little less diverse than with other models, limited to certain cabinet types and six handle styles. This does, however, result in price benefits that make the **I1** an attractive TEAM 7 entry-level kitchen. With **I1**, even price-conscious kitchen design can be highly personalised. The individual elements of **I1** can be combined freely with cupboards from the extensive **linee** range. This allows an almost unlimited breadth of design options. As with **linee**, open solid wood bodies can be integrated into the **I1** kitchen as alcove units or display cases. U-shaped wall shelves provide creative options for kitchen utensils or the herb garden.



KITCHEN CREATIONS

THE KITCHEN CLASSIC

IN THE RONDO COUNTRY-STYLE KITCHEN, CRAFTSMANSHIP MEETS FUNCTIONALITY

Premium solid wood combined with timeless style: TEAM 7's **rondo** country-style kitchen is the epitome of sustainable, consistent values. The design is a playful combination of traditional and contemporary elements of style. At its heart are craftsmanship and the natural characteristics of wood.

Open shelves, cornices, top boards and the gently rounded edges discreetly emphasise the country cottage character of the **rondo** kitchen. Alcove elements, clear glass panels and delightful details such as the stand for a cookbook or tablet, the bottle rack, and solid wood light features combine to create **rondo**'s special charm. This kitchen is also a winner when it comes to functionality and manageability – and turns out to be a veritable wonder of storage space. Tucked away behind a practical roller shutter is a top cabinet that provides plenty of space for kitchen equipment and various utensils.

Like all TEAM 7 solid wood kitchens, the **rondo** offers impressive design freedom and scope for individualisation. Customers can choose from the various TEAM 7 wood types, bar handle options in wood or stainless steel, and roller-door top cabinets with fronts in solid wood, a stainless steel finish or a matt black stainless steel finish. Various design accents in a range of materials offer scope for personal preferences, and the ability to plan a kitchen entirely to suit individual tastes.



The lead role in the **rondo** country-style kitchen of course is always played by wood, with its many talents and positive characteristics. Amongst other things, it has an anti-bacterial effect that provides the perfect basis for hygienic food storage. Solid wood panels with mitred joints, surrounding a natural stone worktop, highlight the skilled craftsmanship that is evident throughout **rondo**. The beautifully constructed interiors of the kitchen, and drawers with dovetailed corner joints are further examples of the traditional Austrian craftsmanship which is an essential part of TEAM 7's work.

In the **rondo** country-style kitchen, the interiors of cupboards and drawers can be designed to your own requirements and ideas – with options such as the ingenious plate shelf that protects porcelain dishes. The flexible spacers can be adjusted to the size of your plates and dishes using the matrix of holes in the solid wood base. Natural wood also has the great advantage that it is particularly protective of good porcelain.



DESIGNER PORTRAITS

Sebastian Desch | *Head of Design*

- Born in Ried im Innkreis, Austria, in 1974
- Training:
 - cabinet maker training
 - interior architecture and furniture design at the HTBLA Hallstatt
- Career milestones:
 - architectural firm Bauböck, Ried im Innkreis
 - from 1994 interior architect and stylist at TEAM 7
 - from 2008 designer for TEAM 7
 - from 2015 Head of Interior Design
 - from 2016 as Head of Interior Design responsible for the design of selected new products, further development of the existing TEAM 7 product range and the overall corporate architecture of the TEAM 7 brand
- Designs for TEAM 7 (selection):

miró table, pur kitchen, echt.zeit kitchen, echt.zeit table, ur coffe table, graphic design element, loft kitchen, cubus pure living room range, hood clolz rack, sol solo piece, filigno writing desk, c3 coffee table, ark bar stool
- Major design awards:

iF DESIGN AWARD, Red Dot Award, BIG SEE Award, RAUM UND WOHNEN Möbel des Jahres, GREEN GOOD DESIGN Award, ICONIC AWARDS: Interior Innovation



Prof. Jacob Strobel | *Designer*

- Born in Würzburg, Germany, in 1978
- Training:
 - learned the craft of furniture making in his uncle's carpentry business as a teenager
 - studied wood design at the Faculty of Applied Arts Schneeberg, Germany
- Career milestones:
 - 2009 bis 2014 Head of Design bei TEAM 7
 - from 2014 professor at the Faculty of Applied Arts Schneeberg (Faculty of the West Saxon University of Applied Sciences of Zwickau)
- Designs for TEAM 7 (selection):

lui chair family, tak table, nox table, nox bed, yps table, stern coffee table, aye chair
- Major design awards:

Red Dot Award, GREEN GOOD DESIGN Award, iF DESIGN AWARD, ICONIC AWARDS: Interior Innovation



Kai Stania | Designer

- Born in Salzburg, Austria, in 1965
- Training:
 - studied architecture at TU Wien (Vienna University of Technology), graduated with distinction in 1996
 - industrial design at the University of Applied Arts Vienna
- Career milestones:
 - became project leader at Ron Arad's studio in London in 1993
 - became university assistant at TU Wien in 1996
 - 1996 to 2008 university assistant at the Institute of Building Construction and Design at TU Wien
 - in 2002, founded his own design office "kai stania | product design"
 - works with TEAM 7, De Sede, Spectral, Bene, Wittmann, Rolf Benz, Cerrutti, Ungaro, Nina Ricci and Hugo Boss, among others
- Designs for TEAM 7 (selection):

pisa desk and desk pedestal, k7 kitchen, riletto bed, float bed, lift coffee table, atelier desk, loup side table, times bed
- Major design awards:

GOOD DESIGN Award, Red Dot Award, iF DESIGN AWARD, Interior Innovation Award, Design Plus Award

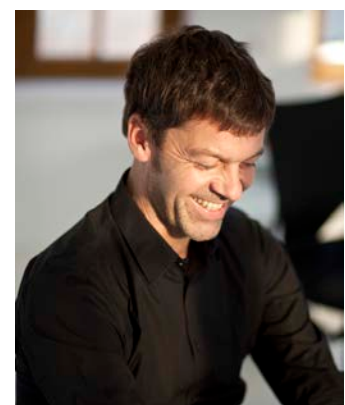


Dominik Tesseraux | Designer

- Born in Bensheim, Germany, in 1966
- Training:
 - cabinet maker training
 - product design, Darmstadt University of Applied Sciences
- Career milestones:
 - Neumeister Design
 - Artefakt
 - Phoenix Design
 - since 2001 – tesseraux+partner, Potsdam, Germany
 - since 2015 – collaboration with TEAM 7
- Designs for TEAM 7 (selection):

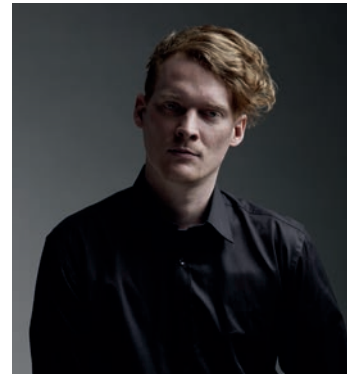
filigno coffee table, filigno kitchen, filigno living room range, EDITION LIGNATUR bathroom furniture (co-produced by Keuco and TEAM 7)
- Major design awards:

German Design Award, Red Dot Award, ICONIC AWARDS: Innovative Interior, iF DESIGN AWARD, GOOD DESIGN Award



Stefan Radinger | Designer

- Born in Krems, Austria, in 1986
- Training:
 - New Design University St. Pölten, sustainable product development studies
 - University of Arts Linz, industrial design, scionic studies
- Career milestones:
 - worked during his studies in various design agencies for clients such as Swarovski, Porsche Austria, KTM, EADS, Rosenbauer, Kapsch etc.
 - in 2012 he founded STUDIO SR.ADD, with a focus on communication design and industrial design
 - collaborates with brands, companies and artists in Europe, Australia and the United States, works for Bene AG, TEAM 7, walden, Berndorf and Joseph Organic
- Designs for TEAM 7 (selection):
 - kids** children's range, **light** bed, **italic** ladder, **sidekick** side table
- Major design awards:
 - German Design Award, Red Dot Award, iF DESIGN AWARD, Compasso d'Oro, IDA Award/Los Angeles, Young and Design/Milano, Austrian Interiors, Austria Iconic Award



This Weber | Designer

- Born in Zurich, Switzerland, in 1973
- Training:
 - trained to become an engineer
 - jewellery and industrial design at the Zurich University of Design and Art (today called the Zurich University of the Arts (ZHdK Zürcher Hochschule der Künste))
- Career milestones:
 - from 1999 product designer at Haeberli Marchand Product Development in Zurich
 - worked from 2000 in product development at Gebrüder Thonet GmbH in Frankenberg, Germany
 - from 2001 product designer at Christophe Marchand Product Development in Zurich
 - from 2006 responsible for the furniture design projects at Hannes Wettstein in Zurich
 - since 2010: own studio This Weber Design Unlimited in Zurich
 - designs for international manufacturers such as Atelier Pfister, Crassevig, Fiam Italia, Intertime, Rolf Benz, Very Wood (Gervasoni Group))
- Designs for TEAM 7 (selection):
 - taso** table, **flor** chair and bench
- Major design awards:
 - German Design Award, ICONIC AWARD: Innovative Interior, Interior Innovation Award



Martin Ballendat | Designer

- Born in Bochum, Germany, in 1958
- Training:
 - design studies at the Folkwang University of the Arts in Essen
- Career milestones:
 - Sedus
 - Head of Design and Development at Wiesner-Hager
 - visiting professor for design at the universities of applied sciences in Graz and Salzburg
 - since 1995 – working for more than 40 renowned brands in 16 countries at Atelier DESIGN BALLENDAT (in Upper Austria and Germany)
- Designs for TEAM 7 (selection):
 - girado chair
- Major design awards:
 - Designer of the year in UK 2019, Red Dot Award, iF DESIGN AWARD, German Innovations Award, ICONIC AWARDS: Best Interieur Innovations, Design Plus Award, Österreichischer Staatspreis



Lucie Koldova | Designerin

- 1983 born in Czech Republic
- Training:
 - studied at the Academy of Art, Architecture and Design in Prague
- Career milestones:
 - 2010 2010 Balloons and Muffins lighting collections for Brokis
 - 2012 Lucie Koldova Studio, Paris
 - since 2013 Creative Director at Brokis
 - 2018 “Das Haus” imm cologne ideal home project
 - 2021-2023 solo exhibition „Lightness“ at the Moravian Gallery in Brno
 - since 2014 Lucie Koldova Studio, Prague
 - designs mainly lights, furniture and glass sculptures for international clients such as Brokis, TON, Todus, Freifrau, Fabbian illuminazione, Haymann Editions, Per/Use, La Chance
 - lately working on hotel projects and interior designs
- Designs for TEAM 7 (selection):
 - elliott Lounge Chair
- Major design awards:
 - Red Dot Award, GOOD DESIGN Award, German Design Award, Elle Deco International Design Award, Grand Designer of the Year/Czech Grand Design Award





CONTACT

TEAM 7 Natürlich Wohnen GmbH
TEAM-7-Platz 1 | A-4910 Ried/Innkreis
Telephone: +43 7752 977-700
E-mail: info@team7.at | www.team7-home.com

Contact information for editorial offices:

GeSK agentur für public relations
Ziegelstraße 29 | D-10117 Berlin
Telephone: +49 30 21750460
E-mail: pr@gesk.berlin | www.gesk.berlin