



PRESS KIT *2024*

- 2 *Editorial: Georg Emprechtlinger*
- 4 *Novelties 2024*
- 4 *elliott lounge chair*
- 7 *sol writing desk*
- 9 *filigno writing desk*
- 11 *taso table*
- 13 *flor chair*
- 15 *Occasional furniture*
- 17 *Wardrobe system*
- 19 *New type of wood: alder white oil*
- 21 *New fabric collection*
- 23 *TEAM 7 world*
- 25 *The green factory*
- 26 *In-depth planning and individuality*
- 28 *Steinway TEAM 7 edition*
- 30 *Designer portraits*



Stefan and Georg Emprechtinger

TEAM 7 WORLD – A VISION HAS BECOME REALITY

Editorial

A NEW GENERATION FOR A HEALTHY AND NATURAL LIFESTYLE

Sustainability, custom-made solid wood furniture and control over the entire supply chain have been the hallmarks of TEAM 7 for over four decades now. Since switching to organic furniture in the 1980s, we have consistently been committed to “green” principles – and have now reached a decisive milestone with TEAM 7 World. It makes a statement about our ongoing efforts to become even more efficient and our strong commitment to sustainable manufacturing.

The completion and opening of TEAM 7 World in 2023 in Ried was one of the most significant days in our company’s history so far. It gives our brand a home and stands for living in harmony with nature. Here, we have succeeded in bringing together exquisite solid woods and masterful craftsmanship, as well as showcasing modern, sustainable architecture. Our completely redesigned company headquarters combines ecological construction methods with renewable energies. The new TEAM 7 World transforms the values that inspire us into tangible reality. It brings our philosophy to life and inspires people to explore new paths and embrace an eco-friendly lifestyle. We are rightfully proud of this achievement.

But there was another very significant event in the past year: we arranged the succession within the company. My son Stefan has joined the management at TEAM 7, and my daughter Elisabeth is contributing new ideas as online marketing project lead. With this, the next generation is now ready to take on leadership responsibilities, and – very important to me – TEAM 7 remains a family-owned business.

With this positive energy, numerous product innovations have emerged that showcase our strengths. Such as the lounge chair **elliott** that we have created together with the designer Lucie Koldova. It reflects the TEAM 7 brand and TEAM 7 World – modern, expressive and sustainable through and through. In addition, alder white oil has been added for the entire range, offering new design options at an attractive price-performance ratio. The light

surface blends perfectly with contemporary home architecture and alder requires only a short growth period compared to other types of wood. This means the furniture can be used for a longer period than the time it takes for the tree to grow back. The **pur** kitchen – a completely new handleless element system – creates even more space for customised planning. Also new are fabric collections and colour palettes as well as an entry-level price segment for selected tables. Numerous advancements of existing products round out our presentation of new products.

TEAM 7 is now represented all over the world. This strong resonance shows us that we are on the right path for a successful future with our consistent commitment to sustainability.



Dr Georg Emprechtlinger
CEO and owner



Stefan Emprechtlinger
Managing director

Stefan, Elisabeth and Georg Emprechtlinger



NOVELTIES 2024

MODERN, CASUAL, TIMELESS – THE ELLIOT LOUNGE CHAIR BY TEAM 7

The glass sculptures, iconic lights and timeless pieces of furniture designed by Lucie Koldova showcase her expressive, atmospheric approach to her art. And now, the designer has created a signature piece that reflects the philosophy of the TEAM 7 brand and the architecture of the new TEAM 7 World: the **elliott** lounge chair. The refreshing reinterpretation of the classic lounge chair is made from renewable materials, provides ultimate comfort and captivates with a design that's as bold as it is casual.

Minimalist design, sophisticated details

elliott owes its invitingly comfortable appeal to the striking volume of its lavish upholstery, which lends it a natural charm that's enhanced even further by the organic curves of the wood. The contrast between the softness of the upholstery and the solid structure lend the design a special expressiveness: **elliott** has a minimalist look, yet is sophisticated in its details. The chair's compact size means that it can be used flexibly in various living areas and combined stylishly with other pieces of furniture. The inviting aesthetic of its design is modern, yet timeless. Solid wood elements with gentle curves form the unconventional base, which features only two legs. The rear leg is connected to the three-dimensional curves of the backrest with a wood joint. The sophisticated design ensures that the two components interlock – giving the chair an elegant look, even from the rear.

Superior seating comfort

The chair's multi-layered upholstery guarantees an excellent seating comfort. With a perfect balance between firmness and elasticity, the layers made of renewable materials ensure long-lasting comfort. This is true for a variety of positions, as the smart design enables sitting in a variety of ways – straight or sideways, upright, casual, or even backwards. The appealing power of the cushion can also be put down to the Italian wool bouclé, which gives **elliott** its distinctive look and feel and is available in brown, beige and green. The exclusive fabric is made up of countless small loops, which produce a unique, lively texture that's both comfortable to sit on and accentuates the beauty of the material.



Sustainable through and through

Like all pieces of TEAM 7 furniture, **elliott** has been designed with sustainability in mind. All solid wood parts, including the moulded wood element hidden inside the upholstered backrest, are assembled without formaldehyde. Only pure natural oil is used for finishing the wood surfaces. The components are manufactured regionally in Upper Austria, resulting in short transport routes and significantly lower CO₂ emissions. The choice of materials for the seat and backrest is also subject to strict environmental criteria. Take the layered upholstery structure, which is made entirely from renewable raw materials: 100 per cent natural latex and coconut latex, encased in a cotton fleece. The wool bouclé fabric cover is certified according to Ökotex Standard 100.

elliott also impresses with its premium craftsmanship and ease of repair: the oiled wooden surfaces can be refreshed or repaired at any time and all upholstered elements can be removed and re-upholstered. Small details are also testament to the care and attention with which the designer and TEAM 7 created the chair: for example, the development of a solution for fastening the fabrics that doesn't require plastics, such as those used for Velcro fasteners. Even the gliders are made from leather fibres, a renewable raw material. This is what makes Lucie Koldova's lounge chair an extraordinary, thoughtfully crafted piece of furniture that promises to bring many years of joy – and masterfully combines environmental considerations and innovation with comfort and aesthetics.

Materials: solid wood (oak nature oil/white oil, walnut), wool bouclé

Dimensions: 78 cm height | 69 cm width | 81 cm depth



“elliot combines eye-catching and sustainable design with ultimate comfort. The interplay of solid natural wood with round yet striking lines and soft upholstery creates an exciting contrast that characterises the bold character of the lounge chair.”

–Designerin Lucie Koldova

Sustainability

All furniture from TEAM 7 is made of high-quality wood, both outside and inside. The hardwoods come from sustainably managed European forests and are finished exclusively with natural oil. This means that they can return to the cycle of nature once they reach the end of their useful life. Our furniture is manufactured exclusively in our own plants in Upper Austria. Signs of wear on the surfaces can be erased by following some simple care measures. This means that TEAM 7 furniture stays beautiful for generations. Enhancements and add-ons are possible at any time, versatile and easy to dismantle in case of a move.



NOVELTIES 2024

A REINVENTED ALL-ROUNDER – SOL WRITING DESK BY TEAM 7

This elegant desk is the perfect addition to the home office: the **sol** writing desk strikes a chord with its clear design, making a stylish and understated impression in all manner of room concepts. The smart basic structure of this model is made up of two interlocking wooden shells – one of which is covered with fine leather. The end-grained wooden edges of the outer shell perfectly showcase the solid wood character of the desk and highlight the outstanding craftsmanship involved in its production.

As a free-standing room element, **sol** radiates a sense of style with its leather-covered back panel, but it also makes a statement on the wall. The sophisticated interplay between the round and angular elements is demonstrated in the cross section of the solid wood legs, which are angular on the outside and organically shaped on the inside. This allows the desk to be matched with a host of different chairs and opens the door to a wide variety of combinations. A series of clever additional functions transform **sol** into the ideal workspace: a socket with USB ports, wireless Qi charging station, containers for writing utensils, pen trays precisely sculpted from the wood and a secret compartment leave no wish unfulfilled. The optional add-on with dimmable LED lighting also ensures adequate light.

The multi-award-winning design of this writing desk has now been refined once more by designer Sebastian Desch, with the pull-out writing surface sporting a new, sophisticated opening mechanism to ensure perfect handling with great precision and stability. When the writing surface is extended and securely fixed in the end position, not only does it provide more legroom, it also ensures convenient and easy access to the desk's interior. This is another aspect of **sol** that's been reinvented. The interior sockets are now positioned in such a way that the writing surface can be closed fully even over taller plugs. The cabling has also been adapted, meaning that even users with a technically fully equipped **sol** will only require one cable for the power supply in the future.



Materials: solid wood, leather

Dimensions: 90 cm height | 80/100/120 cm width | 60 cm depth

TEAM 7

“Sophisticated inside and out: sol is one of our design classics. The smart solitaire combines aesthetics with functionality and now brings even more comfort to the workplace with newly thought-out details.”

–Designer Sebastian Desch



Sustainability

All furniture from TEAM 7 is made of high-quality wood, both outside and inside. The hardwoods come from sustainably managed European forests and are finished exclusively with natural oil. This means that they can return to the cycle of nature once they reach the end of their useful life. Our furniture is manufactured exclusively in our own plants in Upper Austria. Signs of wear on the surfaces can be erased by following some simple care measures. This means that TEAM 7 furniture stays beautiful for generations. Enhancements and add-ons are possible at any time, versatile and easy to dismantle in case of a move.



NOVELTIES 2024

A SOLO PIECE FULL OF SURPRISES – TEAM 7'S FILIGNO WRITING DESK WITH MONITOR LIFT

At first glance, the **filigno** writing desk looks like a dresser. In actual fact, the design conceived by Sebastian Desch combines a clear, minimalist aesthetic with ample storage space and a host of surprising technical features – and can be transformed into a comfortable workspace in next to no time.

The **filigno** writing desk is encased in solid wood panels made using our advanced three-layer technology – guaranteeing the highest stability despite the fine material thickness of just 12 mm. The element rests on a slender metal frame base, which echoes the delicate material thickness of the wooden casing and really helps give the writing desk its weightless look. While the version with a recessed plinth base has the added bonus of offering even more storage space, the metal frame base provides plenty of space for the feet.

The desktop can be pulled forward, with cushioning in both directions, and clicks in at both end positions. When the desktop is extended, a host of additional functions on the inside of the desk are revealed: USB ports and a power socket ensure that users can keep their electronic devices powered up, while the optional Qi charging station supports the wireless smartphone charging. If cables are unavoidable, an integrated cable outlet makes it easy to connect devices inside the writing desk. The finishing touch to this home office setup is the milled pen tray for writing utensils.

A new additional feature really transforms the **filigno** writing desk into the ultimate multifunctional tool: a large, stationary monitor can now be ergonomically positioned at the ideal height thanks to an integrated, continuously height-adjustable monitor lift. This ensures a comfortable and healthy posture, even while working at home. And when the monitor is no longer needed, it vanishes back inside the desk at the push of a button – leaving users with a beautiful solo piece that fits harmoniously into their living space.



Materials: solid wood

Dimensions: 75 cm height |
100/120 cm width | 58 cm depth

TEAM 7

“The screen lift turns the filigno secretary desk into the perfect home office: harmonious organisation in a clear, elegant design and modern comfort when working.”

–Designer Sebastian Desch



Sustainability

All furniture from TEAM 7 is made of high-quality wood, both outside and inside. The hardwoods come from sustainably managed European forests and are finished exclusively with natural oil. This means that they can return to the cycle of nature once they reach the end of their useful life. Our furniture is manufactured exclusively in our own plants in Upper Austria. Signs of wear on the surfaces can be erased by following some simple care measures. This means that TEAM 7 furniture stays beautiful for generations. Enhancements and add-ons are possible at any time, versatile and easy to dismantle in case of a move.



NOVELTIES 2024

THE ALL-ROUNDER WITH GROWTH POTENTIAL – TASO TABLE BY TEAM 7

Smart all-rounder for large and small groups: the **taso** table cuts a figure with its minimalist, clear design, ergonomic shape and sophisticated features. The table, designed by This Weber, can be extended in next to no time, providing plenty of space to host spur-of-the-moment social gatherings. The innovative table extension is effortlessly smooth and extremely convenient: since the pull-out can be extended with ease from a single position, guests don't even have to stand up. An integrated locking element also gives the table a strong, solid base and ensures that the tabletop joints remain closed securely, even when the table is extended. The solid wood surface is preserved without visible profiles, emphasising the care with which TEAM 7 combines aesthetics and functionality down to the very last detail.

In addition to the extendable option, **taso** is also available as a non-extendable table. Both versions sport the same sophisticated aesthetic and ergonomic design. The recessed, solid wood A-shaped legs are a striking design feature and allow seated diners plenty of legroom. Like the table top and key parts of the pull-out, which are produced using state-of-the-art three-layer technology, the base is made from 100% solid wood. Round corners and rounded lower edges make the natural material appear soft as well as stimulating and sensual to the touch.



TEAM 7 has now added a slimmer version of the extendable table to its portfolio, further expanding the scope of individual design options available to its customers. For the versions measuring 160–225 cm in length, the table is now also available in a width of 90 cm. The smaller format opens up greater scope for design planning, especially in rooms with limited space. Another new feature is that both the extendable table and the non-extendable table are now available in the wood type alder. The rapidly renewable alder impresses with its warm look and makes the table a timelessly beautiful addition to the home. Choose between alder white oil, which gives the surfaces a light, inviting appearance, and alder natural oil, which emphasises the red-golden tint.

Materials: solid wood

Dimensions: non-extendable table or extendable table are available in various dimensions

“taso reflects our passion for wood. It makes the fascination behind natural materials tangible. Joy with every touch.”

–Designer This Weber



Sustainability

All furniture from TEAM 7 is made of high-quality wood, both outside and inside. The hardwoods come from sustainably managed European forests and are finished exclusively with natural oil. This means that they can return to the cycle of nature once they reach the end of their useful life. Our furniture is manufactured exclusively in our own plants in Upper Austria. Signs of wear on the surfaces can be erased by following some simple care measures. This means that TEAM 7 furniture stays beautiful for generations. Enhancements and add-ons are possible at any time, versatile and easy to dismantle in case of a move.

NOVELTIES 2024

FLOWER BLOSSOMS AT THE DINING TABLE – FLOR CHAIR BY TEAM 7

Making the dining room more comfortable and cosy: with its organic shape, **flor** shows how the language of nature can be translated alluringly into modern design – and how the dining area can be transformed into a nurturing haven for all. The gently curved backrest of the chair is reminiscent of the shape of a flower, while the sophisticated folds enhance the floral look, testifying to the superior art of upholstery craftsmanship. And then there's the seat with its lavish upholstery made from moulded foam which, together with the chair's rounded, forward-drawn backrest, makes it even more comfortable and is sure to provide a perfect seating experience. As a fine detail, an elegant cording seam runs along the edge of the seat, giving the chair a cosy look.

TEAM 7 is now introducing an additional version of the chair to the **flor** range, with a new swivel base putting a fresh spin on the chair family. The integrated swivel mechanism allows for more movement while sitting and automatically swings the chair back to its original position after the user stand up. Slim solid wood legs converging towards the middle of the chair form an elegant base and perfectly harmonise with the shape and style of the **taso** table. Just like all our other pieces of furniture, this sturdy design was conceived with maximum sustainability in mind. Because no glue is used, all parts of the base can be removed and individually replaced or optimally recycled after a long service life.

Two new fabric collections also give customers more creative freedom: the colour world of the **Sera** fabric collection impresses with subtle tints and genuine virgin wool, while the **Jet** collection made from unmixed Trevira polyester packs more of a punch. In addition to fabric, **flor** can also be upholstered in a variety of different shades of leather. To enjoy the benefits of both materials, there is also the option of combining them for the backrest and the seat – bringing a timelessly beautiful aesthetic.



Materials: solid wood, various fabrics and leathers

Dimensions: chair, bench and corner bench in different dimensions

“Inspired by the organic shape and soft appearance of a flower blossom, flor provides maximum seating comfort.”

–Designer This Weber



Sustainability

All furniture from TEAM 7 is made of high-quality wood, both outside and inside. The hardwoods come from sustainably managed European forests and are finished exclusively with natural oil. This means that they can return to the cycle of nature once they reach the end of their useful life. Our furniture is manufactured exclusively in our own plants in Upper Austria. Signs of wear on the surfaces can be erased by following some simple care measures. This means that TEAM 7 furniture stays beautiful for generations. Enhancements and add-ons are possible at any time, versatile and easy to dismantle in case of a move.

NOVELTIES 2024

DIVERSITY IN A SQUARE – OCCASIONAL FURNITURE BY TEAM 7

Clever nuances and an indispensable attention to detail are what make TEAM 7's solid wood furniture a unique addition to any home. This is also reflected in the occasional furniture belonging to the **cubus**, **cubus pure** and **filigno** ranges: the designs are characterised by a pure solid wood aesthetic and exciting contrasts between homogenous glass surfaces and the vibrant natural grain pattern of the wood. A broad range of design options guarantee that the furniture will be adapted perfectly to the architectural features of the home and personal style preferences: our range of occasional furniture is, for example, available with a skid stand, metal frame base or recessed plinth. A host of additional design elements, including glass surfaces in the colour of choice or a selection of different wood types, also offer plenty of scope for creativity. There are also various models to choose from, in numerous heights, widths and depths, furnished with hinged doors, sliding doors and drawers. Together with the **cubus**, **cubus pure** and **filigno** wall units, it is easy to create seamless transitions between the different living areas of the home.

Our new square doors with criss-cross division offer even more variety when it comes to the planing options available. Discreet joints cleverly divide the surface of the hinged doors into squares, while the criss-cross division allows for a continuous horizontal joint pattern, even with the popular combination of drawers and hinged doors. The new design option is available as a sideboard and a display case with four different front heights and in the materials solid wood, coloured glass and ceramic. The special trick: the square shape makes the occasional furniture pieces appear vast and spacious, even when they are more compact in size. This means that they also go well with smaller tables – and give small spaces a feeling of lightness and elegance.



Materials: solid wood, coloured glass

Dimensions: various designs and dimensions

TEAM 7

“Small squares with a big effect. The clearly structured joint pattern of the new sideboards and highboards creates a generous elegance even in smaller room architectures.”

–Designer Sebastian Desch



Sustainability

All furniture from TEAM 7 is made of high-quality wood, both outside and inside. The hardwoods come from sustainably managed European forests and are finished exclusively with natural oil. This means that they can return to the cycle of nature once they reach the end of their useful life. Our furniture is manufactured exclusively in our own plants in Upper Austria. Signs of wear on the surfaces can be erased by following some simple care measures. This means that TEAM 7 furniture stays beautiful for generations. Enhancements and add-ons are possible at any time, versatile and easy to dismantle in case of a move.

NOVELTIES 2024

CUSTOM MADE FOR ANY ANGLE – TEAM 7 WARDROBE SYSTEM

Nature has a place for everything, and so do TEAM 7's wardrobe systems. The made-to-measure solid wood wardrobes are perfectly adapted to the needs of each individual customer – both on the outside and the inside. Whether it's a spacious wardrobe or a compact cupboard to fit into a small space, we have the ideal solution, right down to the last millimetre. And now, we can cater to any slant on style – and even custom-fit the wardrobe for the unique angles of an attic loft.

Slotting snugly into every nook and cranny

A customised wardrobe design scrupulously takes account of all the features of the room in which the wardrobe will stand. The aim is to make the best possible use of every nook and cranny, even when the architecture of the room is rather complex – for example, if it has sloped ceilings. In this case in particular, it's especially important to make good use of the storage space available. To do this the chosen furniture must be adapted perfectly to the conditions at hand. And, thanks to TEAM 7's order-based production, this is no trouble at all. Attic wardrobes can be integrated with millimetre-precision, whether the critical slope needs to be incorporated to the left, right or behind the wardrobe. This ensures that all the available space is filled efficiently – from wall to wall, floor to ceiling – and creates ample space for clothing, books and much more. The most important thing is making sure that the room always exudes an air of order and calm and that it is easy to keep the wardrobe well-organised.

For more order and a better overview

This can be achieved in no small part by the extensive, sophisticated interior of the wardrobe system, which can also be designed based on individual needs. Customers can choose from different models in a variety of heights, widths, and depths; between hinged and sliding doors, and from a wide selection of wood types or coloured glass. Practical elements such as a clothes lift, trouser pull-out and shirt drawer offer even more scope for creative freedom.

Even though these aspects cover all bases when it comes to satisfying customer requests, TEAM 7 is always coming up with new ideas and approaches to take the functionality and flexibility of its wardrobe systems to the next level. It's latest triumph? Creating even more storage space in the interior by using wider drawers. Further developing the design and construction has meant that a second filler panel is no longer needed when using drawer elements that don't extend across the entire cell width or are used in the more slender individual units. As well as lending the drawers a distinctively more elegant look, this makes them 6 cm wider, providing a much larger storage capacity.



Support throughout every phase of planning

For the fronts of its hinged door, floating door and attic wardrobes, TEAM 7 uses three-layer solid wood panels that hold their shape exceptionally well. Not only do these have an extremely long lifespan, they also promise a minimalist and timelessly modern design. On request, customers can also have elements and wardrobe interiors made in the same type of wood as the front to create a particularly elegant and sophisticated look.

Our team of specialists at TEAM 7 stores and TEAM 7 partners are always on hand to provide support throughout the process of designing the unique wardrobe system – from planning and measurement through to delivery and assembly. Whether the solid wood wardrobe will match the living room furniture, set off the dining room or blend in with the bedroom furnishings: the end result is a piece of artisan craftsmanship – for a personalised home down to the tiniest detail.

“Our wardrobes are customised like a suit. Inside and out, they adapt to individual requirements and do justice to the architecture of the room in order to make the most of every nook and cranny.”

–Designer Sebastian Desch

Materials: solid wood, coloured glass, ceramic

Dimensions: customised planning



Sustainability

All furniture from TEAM 7 is made of high-quality wood, both outside and inside. The hardwoods come from sustainably managed European forests and are finished exclusively with natural oil. This means that they can return to the cycle of nature once they reach the end of their useful life. Our furniture is manufactured exclusively in our own plants in Upper Austria. Signs of wear on the surfaces can be erased by following some simple care measures. This means that TEAM 7 furniture stays beautiful for generations. Enhancements and add-ons are possible at any time, versatile and easy to dismantle in case of a move.

NOVELTIES 2024

A CLASSIC MAKING A COMEBACK – ALDER WHITE OIL BY TEAM 7

It was the first type of wood used by TEAM 7 to craft solid wood furniture and continues to reflect the company's sustainable philosophy to this day: we are, of course, talking about alder. Because the wood from the native alder grows back very quickly and is extremely hardwearing, it meets all environmental standards and sustainability criteria. This means that every piece of furniture made from it can be used for at least as long as it takes a new tree to grow. But alder doesn't just prove its merits from an environmental standpoint – it also radiates a timeless beauty thanks to its warm and inviting wood pattern.

Reason enough to once again make alder the star of the show with a new white oil finish – giving customers more creative freedom when it comes to planning their individual furnishing concepts. Effective immediately, all TEAM 7 products that were already available in alder can now also be obtained in the alder white oil design option. The lighter finish gives the wood a bright appearance that blends in perfectly with contemporary home interiors and goes well with a host of different colour schemes and design ideas – like the understated, cosy Scandinavian style, for example. But fans of the classic alder need not worry, as the natural oil version is also still available. This popular finish accentuates the warm red-golden tint of the wood and exudes a wonderful feeling of homeliness.

Thanks to their treatment with natural oil, not only do TEAM 7 furniture pieces forge an atmosphere of well-being, they also create a pleasant room climate and a healthy environment. Attractively priced, alder wood is the ideal introduction to enjoyable, cosy living in harmony with nature.



TEAM 7's supply chain: it all began with alder

Back in the early 1980s, TEAM 7 took the decision to consistently follow "green" principles and converted its furniture production exclusively to solid wood. The choice of alder also signalled the start of the development of the entire TEAM 7 supply chain because, back then, using this native wood type to make furniture was largely uncharted territory. In order to successfully create furniture from alder wood, the company established its own board factory and invested in its own sawmill at the heart of an alder growing region. To this day, this vertical integration – from the forest to the finished product – continues to be unique and forms the basis for TEAM 7's high-quality and sustainable furniture production.



NOVELTIES 2024

CAPTIVATINGLY BEAUTIFUL, SUSTAINABLE AND EXQUISITELY CRAFTED – THE NEW FABRIC COLLECTION BY TEAM 7

Whether they're sporting soft or bold colours or a smooth or grainy texture: fabric covers lend items of furniture a characteristic look and open the door to a wealth of design options for the home. That's why TEAM 7 has once again significantly expanded the selection of fabrics and materials it offers, introducing three new collections that are sure to radiate a sense of style and wellbeing – and have also proven to be environmentally sustainable.

Sera fabric collection: a real natural talent

Let's start with the **Sera** fabric collection: TEAM 7's selection of materials has been expanded to feature nine carefully coordinated colours in this range. Made from 94 per cent worsted yarn spun from high-quality virgin wool, the fine fabrics are extremely durable and hardwearing with a grainy texture that is pleasantly soft to the touch. They also make an impression with their rich tones, ranging from neutral to bold tints. As a natural, rapidly renewable raw material derived from sheep's fleece, wool has a whole host of positive properties. For example, it is breathable and temperature-balancing, meaning that it's warming in cold conditions and cooling when it's warm. It can also absorb up to a third of its own weight in moisture without feeling damp. These qualities all ensure that users can enjoy long-lasting comfort when seated, particularly if the chair has a wool cover.

But the area where the material proves itself to be a real natural talent is product care: due to the wool fat lanolin, which occurs naturally in the fabric, it absorbs barely any dirt and is therefore exceptionally easy to care for. And that's not all, as **Sera** also satisfies TEAM 7's high standards with regard to all other environmental and quality considerations. The collection is made in Munich by wool specialist and premium textiles manufacturer Rohi. Extensive quality and environmental management measures ensure that all animal protection regulations are complied with, that the production process remains environmentally sound and that all fabrics are free from harmful substances. Accordingly, the new TEAM 7 fabric collection meets the stringent requirements of the Austrian Ecolabel.





Jet fabric collection: the vegan alternative

As well as featuring nine vibrant new colours, the **Jet** collection also gives customers a vegan alternative to virgin wool. The fabrics are produced in Italy using Trevira fibres, which are made entirely of polyester. In addition to giving it a long lifecycle, the unmixed processing of this material also ensures that it can be recycled efficiently and sustainably – and thus meets all the requirements of the circular economy. Similar in look and feel to wool covers, this innovative fabric has a fine texture and is soft to the touch. Its robust nature – washable at up to 60°, flame-resistant – also makes it extremely resilient and highly durable. The fabrics in this collection are certified according to Ökotex Standard 100 as well as the EU Ecolabel, and they meet the criteria of the Austrian Ecolabel. Over and beyond all these strengths, the attractive price point of the new Jet fabric collection is the icing on the cake, making it an exciting planning option that is also particularly ideal for use in the commercial sector.

Nimbus fabric collection: vibrant beauty

The exclusive **Nimbus** wool bouclé gives the new Elliot lounge chairs by TEAM 7 a distinctive look and feel. The fabric is made up of lots of small loops that create a unique, sumptuous texture. The plush upholstery oozes a feeling of comfort, while the organic texture highlights the beauty of the material. The emotional power of **Nimbus** is further enhanced by a subtle melange effect, which makes the colouring feel less saturated and particularly inviting. The fabric collection is designed and produced in Italy. The upholstery fabrics are certified according to Ökotex Standard 100 and are available in three select tints – brown, beige and green.



TEAM7 WORLD

A PLACE OF INSPIRATION – A MILESTONE ON THE GREEN ROAD

For more than four decades, TEAM 7 has been committed to implementing sustainable practices, producing premium quality made-to-measure products and maintaining control over its entire supply chain. This is reflected clearly by the new company headquarters in Ried im Innkreis: TEAM 7 World and the new energy centre combine ecological construction with renewable energies to create furniture with a unique aesthetic.

The new TEAM 7 World and state-of-the-art energy centre are not only proof of our commitment to the region, but also to the values of the TEAM 7 brand. They represent the largest investment in the company's history: between 2021 and 2023, a total of approximately EUR 47 million was invested in the new construction and a host of innovative technologies – EUR 31 million of which was earmarked for TEAM 7 World alone. The new headquarters sets standards in terms of green building and clearly demonstrates how a modern lifestyle and active climate protection go hand in hand. TEAM 7 World also gives the brand a home, where the company's passion and enthusiasm for design, craftsmanship and nature as well as our range of unique solid wood furniture are brought to life.

Future-oriented building architecture

The basic idea behind the 6,100 m² TEAM 7 World was to create an eco-friendly building that satisfies the highest design standards using timber construction techniques. Instead of relocating to a greenfield site, TEAM 7 decided to remain at its inner-city location and to densify it, using environmentally-sound methods to regenerate brownfield land and conserving valuable outdoor areas. Flexibility, intelligent low-tech building features, green roofs, photovoltaic systems and mixed-use spaces were further key considerations of this project. The result was a four-storey timber frame construction around a concrete core consisting of an underground car park and stairwell. An elaborate slab and bar construction frames the generous glass surfaces. With this structural and aesthetic emphasis on wood as a building material, TEAM 7 is consciously giving a nod to its high-quality solid wood furniture, which exemplifies outstanding quality, custom craftsmanship and sustainability. 5,500 solid cubic metres of round timber was used for beams, trusses, ceilings and exterior walls alone – 1,000 solid cubic metres of which came from the company's own forest and the rest from regional stocks. This is particularly sustainable, as the amount of wood processed as part of this project grows back every 100 minutes in Austria and also stores carbon from around 2,500 tonnes of CO₂ in the long term. The building is therefore almost like a second forest – as trees remove carbon dioxide from the air and convert it into oxygen and carbon through the process of photosynthesis. This carbon remains stored in the wood, while the trees that were planted to replace those removed grow back.

Innovative energy concept

The energy concept is just as coherent. For example, the building is heated and cooled entirely without fossil fuels. The system technology is centred around our ultramodern energy centre, boasting its own heat pumps, buffer storage system and emergency generator. Thanks to its energy concept and by reducing building services to a minimum, TEAM 7 World is particularly low-maintenance, resource-saving and energy-efficient. For instance, the room climate in the new building complex is pleasant at all times – without the need for air-conditioning. This is possible thanks to a clever mix of natural shading provided by canopies, solar screens and the company's very own sun protection slats. The underfloor heating can also be used to heat or cool the rooms as required. A smart window ventilation system on the office floors enable night-time cooling during the warm seasons, with additional cooling energy provided by a tank linked to the sprinkler system. We generate our own heat by using the biomass from the production of wooden furniture. In addition, all the waste heat from

the equipment is stored in a 100,000 litre buffer storage system and reused to optimise heating. In addition to purchasing green electricity from renewable energy sources, PV systems on the roof of TEAM 7 World, on the façade of the energy centre and on the production halls provide the site with sustainable power. Further aspects of the building's climate control strategy include trees to shade the rooms on the ground floor and green roofs and courtyards to improve the microclimate.

Sustainable materials

The materials used in and on the building were also chosen on the basis of environmental criteria, with the company making a conscious decision to avoid petroleum-based products and composites. TEAM 7 instead opted to rely on natural and recyclable materials that can later be returned unmixed to the value chain cycle, and chose to work with regional partners and use the shortest possible delivery routes. Inside the building, for example, open-pore wooden surfaces create a healthy room climate, complemented by linoleum and loam-casein floors that are free from harmful chemicals. Because the health and well-being of guests and employees is a top priority at TEAM 7 World. Equipped with our healthy, ergonomic pisa desks, maximum comfort is also guaranteed in the offices.

Making nature tangible

The new TEAM 7 World boasts a variety of facilities, including 170 workspaces, the TEAM 7 Academy with three large seminar rooms and the two-storey TEAM 7 store spanning 1,200 m². Visitors to the world's largest TEAM 7 store can find out what we mean by "living in harmony with nature" and explore the almost endless possibilities offered by TEAM 7's custom-made furniture in a unique way. They can also go on a culinary adventure, enjoying a selection of regional products and observing the open kitchen in the pleasant atmosphere of the restaurant "MYC" – conceived by neo-restaurateurs David Gattringer and Karl Gramberger. The garden and rooftop sky bar are also worth a visit – because the new TEAM 7 World is much more than just company headquarters. As a Place of Encounter, it brings together employees, industry partners and lovers of aesthetic solid wood furniture. The combination of efficient technology, materials of the highest quality and genuine craftsmanship has produced a TEAM 7 World with a feel-good atmosphere and high design standards. A place that inspires people to live a sustainable lifestyle.

TEAM 7 World | © Kurt Hörbst



THE GREEN FACTORY

FOR THE SAKE OF THE ENVIRONMENT – MAXIMUM PRODUCTION EFFICIENCY

“Our aim is to develop the most eco-friendly and efficient solid wood manufacturing system in the world: TEAM 7’s ‘green factory!’” A clear statement that will guide the future of TEAM 7. From the forest to the finished furniture, the company resolves to manage all its affairs in line with environmental and economic principles. With two furniture factories, a board factory and a sawmill, TEAM 7 is in full control of its entire supply chain and strives to achieve maximum energy and resource efficiency in all areas of its operations. High-quality solid wood furniture systems are born out of the interplay of cutting-edge technology, traditional craftsmanship and top-class materials at our base in Ried im Innkreis. Systems that are durable, made to measure, environmentally friendly and of the finest quality. In order to ensure that it can continue to offer products of this calibre, TEAM 7 is constantly working to improve its sustainability performance and investing in new technologies. One important part of this is the “green factory”. The new TEAM 7 World and the energy centre in Ried are key building blocks for achieving maximum efficiency, and make a measurable contribution to climate protection.

With the environmentally friendly architecture of its new company headquarters and its innovative energy concept, TEAM 7 is implementing its vision of green manufacturing. One of the measures that the eco-pioneer has adopted in pursuit of this vision is to exclusively use natural and recyclable materials that can later be returned unmixed to the value chain cycle. The main building material, however, is wood. 5,500 solid cubic metres of round timber were processed for the construction of TEAM 7 World alone, 1,000 solid cubic metres of which originated from the company’s own forest and the rest from regional stocks. This is where sustainability proves to be an extremely efficient approach: because the amount of wood processed as part of this project grows back in Austria every 100 minutes and the wood used stores carbon from around 2,500 tonnes of CO₂ in the long term.

Climate-friendly production at the “green factory”

The ultramodern energy centre is an essential step on our journey to achieving energy self-sufficiency at our Ried site, boasting its own heat pumps, buffer storage system and emergency generator, along with a host of other facilities. The biomass heating system uses surplus wood chips to generate heat, while a smart window ventilation system enables night-time cooling in summer. TEAM 7 World does not use any fossil fuels for its heating or cooling. What’s more, the photovoltaic system in Ried and Pram has been expanded to a total of 550 kWp. Another key prerequisite for the “green factory” is “cleaner production”, which includes optimising the company’s use of energy as well as minimising its water consumption and reducing waste. TEAM 7 is steadily reducing its CO₂ emissions thanks to a variety of energy efficiency measures it has adopted in conjunction with the energy centre, the CO₂-reducing effect of the solid wood furniture it produces and the reduction effects brought about by the company’s very own forest.

Further expanding our sustainability strategies

The furniture produced in 2022 alone absorbs the carbon from around 6,700 tonnes of CO₂, while TEAM 7’s self-managed forest removes a further 1,000 tonnes per year from the atmosphere. This carbon, resulting from a total of 7,700 tonnes of CO₂, corresponds to more than three times the company’s total annual emissions, as its carbon footprint currently accounts for CO₂ emissions totalling 2,274 tonnes (Scope 3). While the state-of-the-art energy centre with its low-maintenance, resource-sparing design was the next major step in the greening process, TEAM 7 is continuing to work on a series of additional measures to support this undertaking – for example, optimising the use of wood and creating car pools. The ongoing development of the comprehensive sustainability strategy demonstrates the company’s strong commitment to developing the most eco-friendly and efficient solid wood manufacturing system in the world: the “green factory”.

IN-DEPTH PLANNING AND INDIVIDUALITY

AT TEAM 7, PEOPLE ARE AT THE HEART OF WHAT WE DO

Dazzling diversity of design and individual, made-to-measure production are part and parcel of the culture at TEAM 7. This is made possible by our sound understanding of wood as a material and our love of artisan craftsmanship. Even the wood pattern on the surfaces is sorted by hand for every single board that we use to make our unique solid wood furniture. This is the only way that we can ensure that the beauty of the wood is accented and showcased. With an eye to perfecting the aesthetic of the furniture, TEAM 7 now also offers a consistent grain pattern for furniture elements made from walnut – at no extra cost and up to a length of four metres. Even the table inserts of the popular tak and magnum dining tables now feature the grain pattern of the table's surface as standard, creating a harmonious overall look. This demonstrates that every TEAM 7 product is crafted masterfully, with distinctive aesthetic and functional qualities and an impressive depth of planning. Every last detail is tailored to customers' exact wishes, whether this relates to the height, width and depth of the furniture, the combination of cabinets, shelves and standalone pieces, or the interior organisation, materials and workmanship.

Customisation – anything is possible

The home is the measure of all things. TEAM 7 is a firm believer in this principle and has come to specialise in production with millimetre precision. Whether it's for a house, apartment or a commercial property, the layout is complex or the room dimensions complicated: with TEAM 7's versatile furniture systems, our expertly trained interior designers will always find the perfect solution – including bespoke designs. To do this, they work closely with customers and take plenty of time to fulfil each and every one of their requirements perfectly – from providing a personal consultation and professional 3D furniture planning to ensuring reliable delivery and expert assembly. Even the coordination of electricians or plumbers is included in our service package. Environmental factors are also playing an increasingly important role when it comes to our choice of furniture. Anyone who decides to purchase a piece of furniture from TEAM 7 is guaranteed to receive a product that has been produced lovingly and with great attention to detail and that promises a long functional and aesthetic lifespan.



Comprehensive advice and planning down to the last detail: In the TEAM 7 stores, customer wishes are realised individually.

Inspiration – the hallmark of a good planner

TEAM 7 not only provides new furniture, it also encourages people to see life through a new eyes. Because a growing number of people have a keen interest in procuring custom-made furniture systems designed in line with their very personal ideas and visions. To cater to this trend, TEAM 7 offers a broad selection of high-quality solid wood furniture for the living room, sleeping area, dining room, kids' room, entry hall, "wohnofficio" and kitchen. In various wood types and with versatile features as well as in combination with numerous colours, materials and sizes. This creates a harmonious concept of space that can be applied throughout the entire home, if desired. This can be experienced firsthand at our exquisitely staged TEAM 7 stores, which combine solid wood furniture with individualised layout options and a comprehensive personal consultation to create a one-of-a-kind shopping experience. And our highly-trained interior designers and furniture planners won't rest until they have fulfilled the wishes of their customers. On 10 November 2023, the world's largest TEAM 7 store, spanning 1,200 m², opened at TEAM 7 World in Ried im Innkreis, representing a spectacular testament to the brand manufacturer's expertise. What has been created here is a place of inspiration, where customers can experience the interplay of design and nature through a unique lens.



A place of inspiration for natural, sustainable living: the world's largest TEAM 7 store in the TEAM 7 world in Ried

STEINWAY TEAM 7 EDITION

TEAM 7

TEAM 7 SUPPLIES LEGENDARY INSTRUMENT MAKER – SOUNDS OF UPPER AUSTRIA IN THE STEINWAY PIANO

The distinctive sound produced by a Steinway is rich and round, making it particularly suitable for playing compositions of the great classics – pieces by Mozart, Beethoven, Schubert and Chopin, to name but a few. But jazz legends like Duke Ellington and popular modern virtuosos like Lang Lang have also built their international careers around the unmistakable tones of the Steinway & Sons grand piano. What few people know is that some of the instrument's key components originate from Upper Austria. More specifically, from the TEAM 7 plant in Pram.

A partnership spanning almost 20 years

It all started in Hamburg back in the nineteenth century: the German organ builder Heinrich Engelhardt Steinweg had already made a name for himself as a respected piano maker when he and his family emigrated to the United States, where he establishes the company Steinway & Sons in 1853. The scrupulously constructed, sonorous pianos rapidly soon became highly sought after. In addition to a steady stream of new commissions, they soon brought the Steinways fame and prestige – and a reputation associated with excellence, exclusivity and inimitable perfection. For almost 20 years now, TEAM 7 has also had a hand in further consolidating this reputation. The eco-friendly furniture pioneer from Upper Austria has been working with the instrument maker since 2005 and supplies key components of the body of the Steinway grand piano.

“With our absolute precision craftsmanship, reasonable price-performance ratio and, last but not least, the necessary passion, we succeeded in moving the production operations from New York to Upper Austria”, explains TEAM 7 Managing Director Hermann Pretzl, reminiscing on the origins of this partnership. The starting point of the cooperation was an encounter at the furniture supplier trade fair Interzum, where Steinway approached TEAM 7 to enquire as to whether it could supply the maple slats for the body of its pianos. Maple is the base and raw material for the body of each grand piano – and their quality requirements were correspondingly high. After being extremely impressed by the initial results delivered by TEAM 7, the piano maker then decided to award the commission to the Upper Austrian company. The company from Upper Austria thus became the first external supplier to be a major contributor to the nature and quality of Steinway pianos.



Highly elaborate manufacturing process

Instrumental to the collaboration is TEAM 7's expertise with wood. This begins with the meticulous selection of the wood, which is why full control over the corresponding supply chain is essential. The elements used in the body of the piano are made from American maple, whose extremely fine grain is crucial for generating the characteristic, rich sound. Equally important is the long dry storage period of two years, which gives the wood enough time to “rest”, as Hermann Pretzl puts it.

After this, the first priority is to achieve absolute uniformity when cutting the wood to size and to ensure that the wood structure is suitable: which wood grain can be seen where must not be left to chance and is carefully inspected. As a final step in the manufacturing process, the maple wood elements are glued together and processed into long strips, with each strip consisting of up to twenty layers. These strips are the shaping component from which the body of the grand piano is ultimately sculpted at the European Steinway production facility in Hamburg.

TEAM 7 limited edition crowns the collaboration

“We’re extremely proud that our craftsmanship has been helping to give these magnificent, iconic instruments their world-famous sound for so long,” says a delighted Hermann Pretzl. The two companies recently crowned their successful collaboration with a special highlight, launching a TEAM 7 limited edition of the classic Steinway grand piano consisting of just seven pieces, the first of which is now on display in the lobby of the new TEAM 7 World in Ried.



DESIGNER PORTRAITS

Sebastian Desch | *Head of Design*

- Born in Ried im Innkreis, Austria, in 1974
- Training:
 - cabinet maker training
 - interior architecture and furniture design at the HTBLA Hallstatt
- Career milestones:
 - architectural firm Bauböck, Ried im Innkreis
 - from 1994 interior architect and stylist at TEAM 7
 - from 2008 designer for TEAM 7
 - from 2015 Head of Interior Design
 - from 2016 as Head of Interior Design responsible for the design of selected new products, further development of the existing TEAM 7 product range and the overall corporate architecture of the TEAM 7 brand
- Designs for TEAM 7 (selection):
 - miró table, pur kitchen, echt.zeit kitchen, echt.zeit table, ur coffe table, graphic design element, loft kitchen, cubus pure living room range, hood clolz rack, sol solo piece, filigno writing desk, c3 coffee table, ark bar stool
- Major design awards:
 - iF DESIGN AWARD, Red Dot Award, BIG SEE Award, RAUM UND WOHNEN Möbel des Jahres, GREEN GOOD DESIGN Award, ICONIC AWARDS: Interior Innovation



Prof. Jacob Strobel | *Designer*

- Born in Würzburg, Germany, in 1978
- Training:
 - learned the craft of furniture making in his uncle's carpentry business as a teenager
 - studied wood design at the Faculty of Applied Arts Schneeberg, Germany
- Career milestones:
 - 2009 bis 2014 Head of Design bei TEAM 7
 - from 2014 professor at the Faculty of Applied Arts Schneeberg (Faculty of the West Saxon University of Applied Sciences of Zwickau)
- Designs for TEAM 7 (selection):
 - lui chair family, tak table, nox table, nox bed, yps table, stern coffee table, aye chair
- Major design awards:
 - Red Dot Award, GREEN GOOD DESIGN Award, iF DESIGN AWARD, ICONIC AWARDS: Interior Innovation



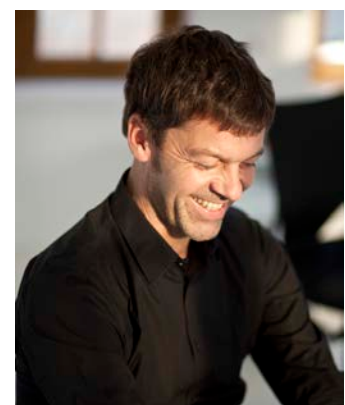
Kai Stania | Designer

- **Born in Salzburg, Austria, in 1965**
- **Training:**
 - studied architecture at TU Wien (Vienna University of Technology), graduated with distinction in 1996
 - industrial design at the University of Applied Arts Vienna
- **Career milestones:**
 - became project leader at Ron Arad's studio in London in 1993
 - became university assistant at TU Wien in 1996
 - 1996 to 2008 university assistant at the Institute of Building Construction and Design at TU Wien
 - in 2002, founded his own design office "kai stania | product design"
 - works with TEAM 7, De Sede, Spectral, Bene, Wittmann, Rolf Benz, Cerrutti, Ungaro, Nina Ricci and Hugo Boss, among others
- **Designs for TEAM 7 (selection):**
pisa desk and desk pedestal, **k7** kitchen, **riletto** bed, **float** bed, **lift** coffee table, **atelier** desk, **loup** side table, **times** bed
- **Major design awards:**
 GOOD DESIGN Award, Red Dot Award, iF DESIGN AWARD, Interior Innovation Award, Design Plus Award



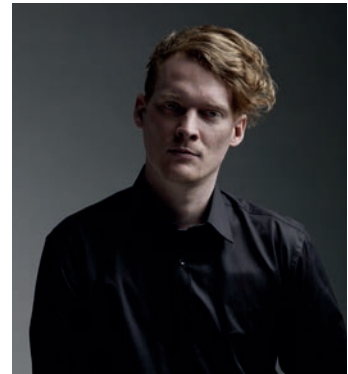
Dominik Tesseraux | Designer

- **Born in Bensheim, Germany, in 1966**
- **Training:**
 - cabinet maker training
 - product design, Darmstadt University of Applied Sciences
- **Career milestones:**
 - Neumeister Design
 - Artefakt
 - Phoenix Design
 - since 2001 – tesseraux+partner, Potsdam, Germany
 - since 2015 – collaboration with TEAM 7
- **Designs for TEAM 7 (selection):**
filigno coffee table, **filigno** kitchen, **filigno** living room range, EDITION LIGNATUR bathroom furniture (co-produced by Keuco and TEAM 7)
- **Major design awards:**
 German Design Award, Red Dot Award, ICONIC AWARDS: Innovative Interior, iF DESIGN AWARD, GOOD DESIGN Award



Stefan Radinger | Designer

- Born in Krems, Austria, in 1986
- Training:
 - New Design University St. Pölten, sustainable product development studies
 - University of Arts Linz, industrial design, scionic studies
- Career milestones:
 - worked during his studies in various design agencies for clients such as Swarovski, Porsche Austria, KTM, EADS, Rosenbauer, Kapsch etc.
 - in 2012 he founded STUDIO SR.ADD, with a focus on communication design and industrial design
 - collaborates with brands, companies and artists in Europe, Australia and the United States, works for Bene AG, TEAM 7, walden, Berndorf and Joseph Organic
- Designs for TEAM 7 (selection):
 - kids** children's range, **light** bed, **italic** ladder, **sidekick** side table
- Major design awards:
 - German Design Award, Red Dot Award, iF DESIGN AWARD, Compasso d'Oro, IDA Award/Los Angeles, Young and Design/Milano, Austrian Interiors, Austria Iconic Award



This Weber | Designer

- Born in Zurich, Switzerland, in 1973
- Training:
 - trained to become an engineer
 - jewellery and industrial design at the Zurich University of Design and Art (today called the Zurich University of the Arts (ZHdK Zürcher Hochschule der Künste))
- Career milestones:
 - from 1999 product designer at Haeberli Marchand Product Development in Zurich
 - worked from 2000 in product development at Gebrüder Thonet GmbH in Frankenberg, Germany
 - from 2001 product designer at Christophe Marchand Product Development in Zurich
 - from 2006 responsible for the furniture design projects at Hannes Wettstein in Zurich
 - since 2010: own studio This Weber Design Unlimited in Zurich
 - designs for international manufacturers such as Atelier Pfister, Crassevig, Fiam Italia, Intertime, Rolf Benz, Very Wood (Gervasoni Group))
- Designs for TEAM 7 (selection):
 - taso** table, **flor** chair and bench
- Major design awards:
 - German Design Award, ICONIC AWARD: Innovative Interior, Interior Innovation Award



Martin Ballendat | Designer

- Born in Bochum, Germany, in 1958
- Training:
 - design studies at the Folkwang University of the Arts in Essen
- Career milestones:
 - Sedus
 - Head of Design and Development at Wiesner-Hager
 - visiting professor for design at the universities of applied sciences in Graz and Salzburg
 - since 1995 – working for more than 40 renowned brands in 16 countries at Atelier DESIGN BALLENDAT (in Upper Austria and Germany)
- Designs for TEAM 7 (selection):
 - girado chair
- Major design awards:
 - Designer of the year in UK 2019, Red Dot Award, iF DESIGN AWARD, German Innovations Award, ICONIC AWARDS: Best Interieur Innovations, Design Plus Award, Österreichischer Staatspreis



Lucie Koldova | Designerin

- 1983 born in Czech Republic
- Training:
 - studied at the Academy of Art, Architecture and Design in Prague
- Career milestones:
 - 2010 2010 Balloons and Muffins lighting collections for Brokis
 - 2012 Lucie Koldova Studio, Paris
 - since 2013 Creative Director at Brokis
 - 2018 “Das Haus” imm cologne ideal home project
 - 2021-2023 solo exhibition „Lightness“ at the Moravian Gallery in Brno
 - since 2014 Lucie Koldova Studio, Prague
 - designs mainly lights, furniture and glass sculptures for international clients such as Brokis, TON, Todus, Freifrau, Fabbian illuminazione, Haymann Editions, Per/Use, La Chance
 - lately working on hotel projects and interior designs
- Designs for TEAM 7 (selection):
 - elliott Lounge Chair
- Major design awards:
 - Red Dot Award, GOOD DESIGN Award, German Design Award, Elle Deco International Design Award, Grand Designer of the Year/Czech Grand Design Award





CONTACT

TEAM 7 Natürlich Wohnen GmbH
TEAM-7-Platz 1 | A-4910 Ried/Innkreis
Telephone: +43 7752 977-700
E-mail: info@team7.at | www.team7-home.com

Contact information for editorial offices:

GeSK agentur für public relations
Ziegelstraße 29 | D-10117 Berlin
Telephone: +49 30 21750460
E-mail: pr@gesk.berlin | www.gesk.berlin